

# **Double**Quik - Dimensional Data

## TABLE OF CONTENTS

Pipe.....	2
EndCap.....	3
Anchored 90° Elbow .....	4
90° Elbow .....	5
Anchored 45° Elbow .....	6
45° Elbow.....	7
Anchored Tee .....	8
Tee.....	9
Anchored Lateral .....	10
Lateral .....	11
Anchored Reducer .....	12
Reducer .....	13
Anchored P-Trap .....	14
P-Trap .....	15
Anchored Reducing Tee.....	16
Reducing Tee .....	17
Support.....	18
Anchored Lateral with 1/8 Bend .....	19
Pump-Out .....	20

# DoubleQuik - Dimensional Data

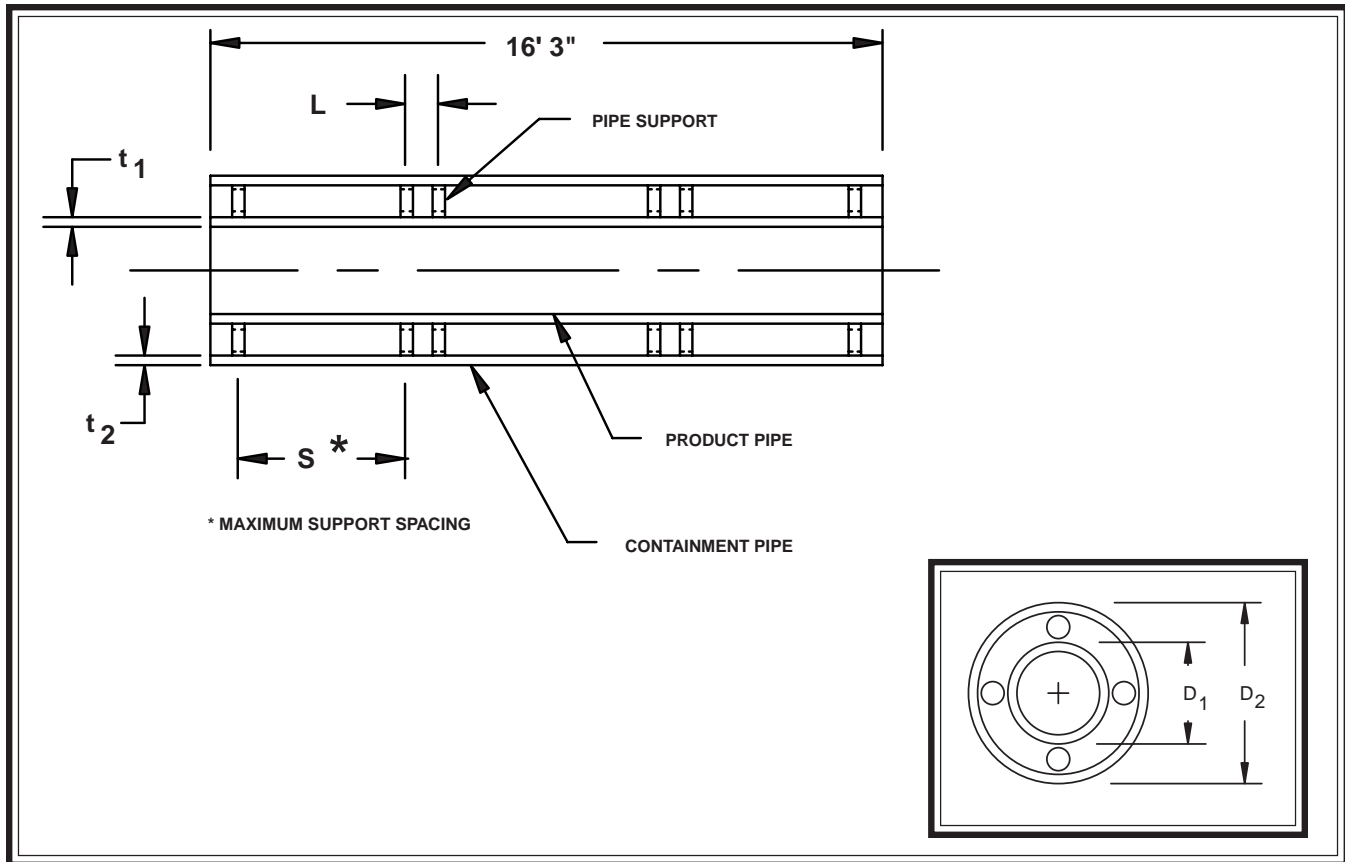
## STRAIGHT ASSEMBLY

Description: Straight Assembly

Material: Polypropylene

Execution: Molded

Connection: Butt-Fusion



NOMINAL PIPE SIZE		SDR 11		SDR 17.6		SDR 32.5		S (FT.)	L (IN.)	PART NUMBERS	
		$D_1$ (IN.)	$t_1$ (IN.)	$D_2$ (IN.)	$t_2$ (IN.)	$D_2$ (IN.)	$t_2$ (IN.)			SDR 11 X 17.6	SDR 11 X 32.5
1	4	1.26	.12	4.33	.25	4.33	.138	4	4	9901000	9901011
1 1/2	4	1.97	.18	4.33	.25	4.33	.138	4	4	9901001	9901012
2	4	2.48	.23	4.33	.25	4.33	.138	5	4	9901002	9901013
2	6	2.48	.23	6.30	.36	6.30	.197	5	4	9901003	9901014
2 1/2	6	2.95	.27	6.30	.36	6.30	.197	5	4	9901004	9901015
3	6	3.54	.32	6.30	.36	6.30	.197	7	4	9901005	9901016
4	8	4.33	.39	7.87	.45	7.87	.244	8	6	9901006	9901017
6	10	6.30	.57	9.84	.56	9.84	.307	8	6	9901007	9901018
8	12	7.87	.72	12.40	.70	12.40	.386	10	8	9901008	9901019
10	14	9.84	.90	13.98	.79	13.98	.437	10	10	9901009	9901020
12	16	12.40	1.13	15.75	.89	15.75	.488	10	10	9901010	9901021

# DoubleQuik - Dimensional Data

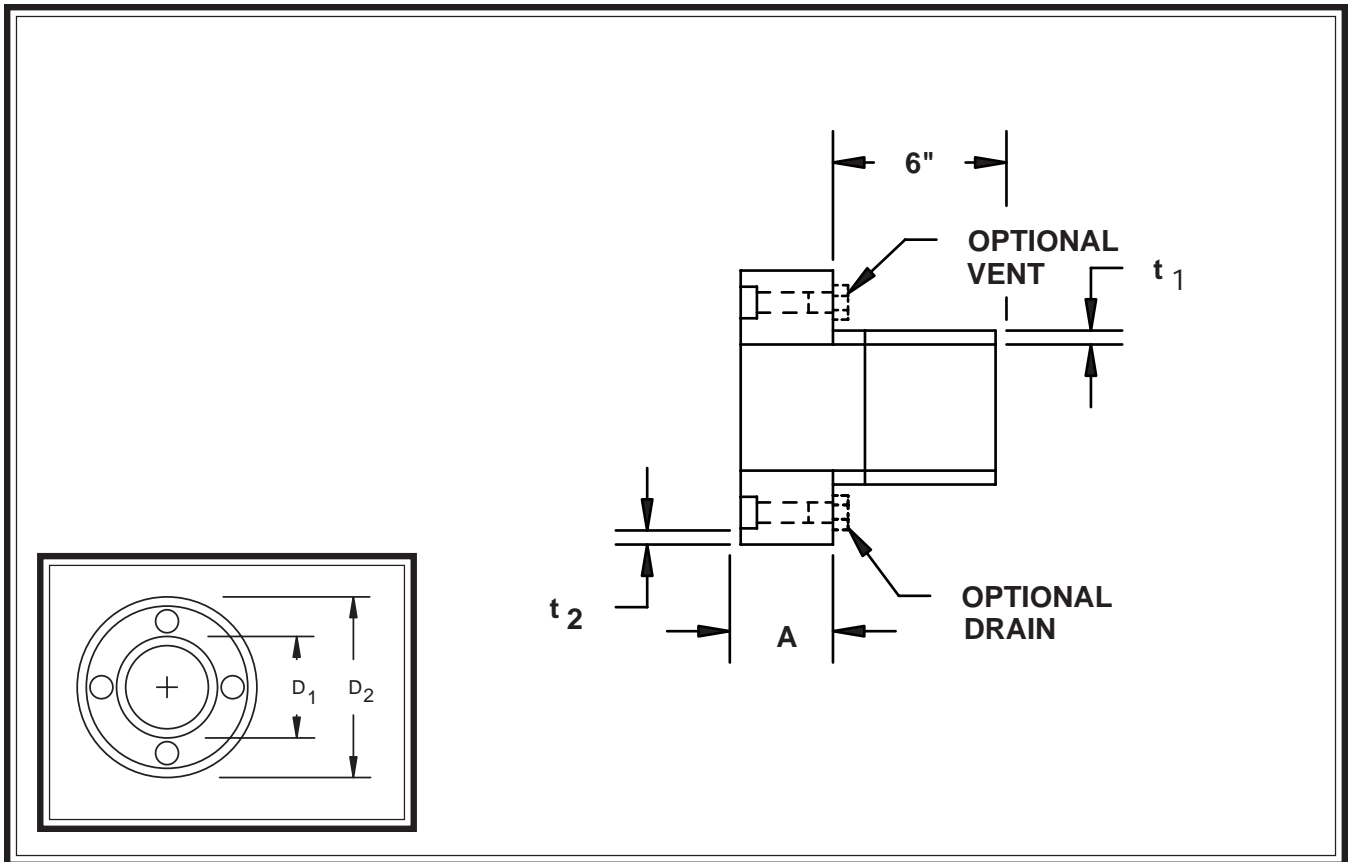
## END SEAL

Description: End Seal

Material: Polypropylene

Execution: Molded

Connection: Butt-Fusion



NOMINAL PIPE SIZE		SDR 11		SDR 17.6		SDR 32.5		A	PART NUMBERS	
		D <sub>1</sub> (IN.)	t <sub>1</sub> (IN.)	D <sub>2</sub> (IN.)	t <sub>2</sub> (IN.)	D <sub>2</sub> (IN.)	t <sub>2</sub> (IN.)		SDR 11 X 17.6	SDR 11 X 32.5
INNER (IN.)	OUTER (IN.)									
1	4	1.26	.12	4.33	.25	4.33	.138	1.375	9901388	9901399
1 1/2	4	1.97	.18	4.33	.25	4.33	.138	1.625	9901389	9901400
2	4	2.48	.23	4.33	.138	4.33	.138	1.750	9901390	9901401
2	6	2.48	.23	6.30	.36	6.30	.197	1.750	9901391	9901402
2 1/2	6	2.95	.27	6.30	.36	6.30	.197	1.750	9901392	9901403
3	6	3.54	.32	6.30	.36	6.30	.197	1.750	9901393	9901404
4	8	4.33	.39	7.87	.45	7.87	.244	1.875	9901394	9901405
6	10	6.30	.57	9.84	.56	9.84	.307	2.125	9901395	9901406
8	12	7.87	.72	12.40	.70	12.40	.386	2.375	9901396	9901407
10	14	9.84	.90	13.98	.79	13.98	.437	2.625	9901397	9901408
12	16	12.40	1.13	15.75	.89	15.75	.488	2.875	9901398	9901409

# DoubleQuik - Dimensional Data

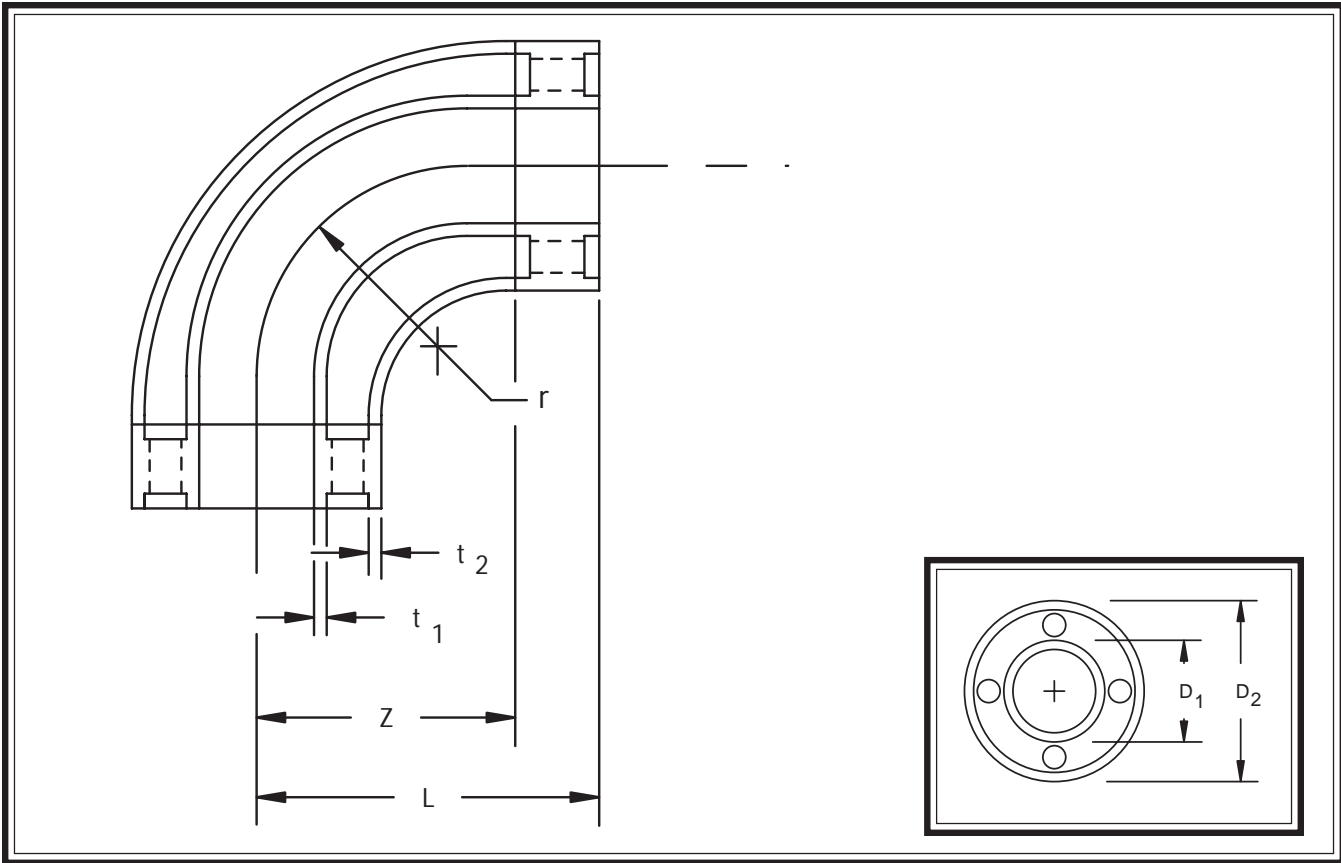
## ANCHORED 90° ELBOW

Description: Anchored 90° Elbow

Material: Polypropylene

Execution: Molded

Connection: Butt-Fusion



NOMINAL PIPE SIZE		SDR 11		SDR 17.6		SDR 32.5		r	Z	L	PART NUMBERS	
		D <sub>1</sub> (IN.)	t <sub>1</sub> (IN.)	D <sub>2</sub> (IN.)	t <sub>2</sub> (IN.)	D <sub>2</sub> (IN.)	t <sub>2</sub> (IN.)				SDR 11 X 17.6	SDR 11 X 32.5
INNER (IN.)	OUTER (IN.)	(IN.)	(IN.)	(IN.)	(IN.)	(IN.)	(IN.)	(IN.)	(IN.)	(IN.)		
1	4	1.26	.12	4.33	.25	4.33	.138	1.89	4.68	6.43	9901044	9901055
1 1/2	4	1.97	.18	4.33	.25	4.33	.138	2.95	4.68	6.68	9901045	9901056
2	4	2.48	.23	4.33	.25	4.33	.138	3.74	4.68	6.81	9901046	9901057
2	6	2.48	.23	6.30	.36	6.30	.197	3.74	6.53	8.65	9901047	9901058
2 1/2	6	2.95	.27	6.30	.36	6.30	.197	4.45	6.53	8.65	9901048	9901059
3	6	3.54	.32	6.30	.36	6.30	.197	5.31	6.53	8.65	9901049	9901060
4	8	4.33	.39	7.87	.45	7.87	.244	6.50	8.11	10.36	9901050	9901061
6	10	6.30	.57	9.84	.56	9.84	.307	9.45	9.96	12.46	9901051	9901062
8	12	7.87	.72	12.40	.70	12.40	.386	11.81	10.43	13.18	9901052	9901063
10	14	9.84	.90	13.98	.79	13.98	.437	14.76	13.39	16.39	9901053	9901064
12	16	12.40	1.13	15.75	.89	15.75	.488	18.62	13.78	17.03	9901054	9901065

# DoubleQuik - Dimensional Data

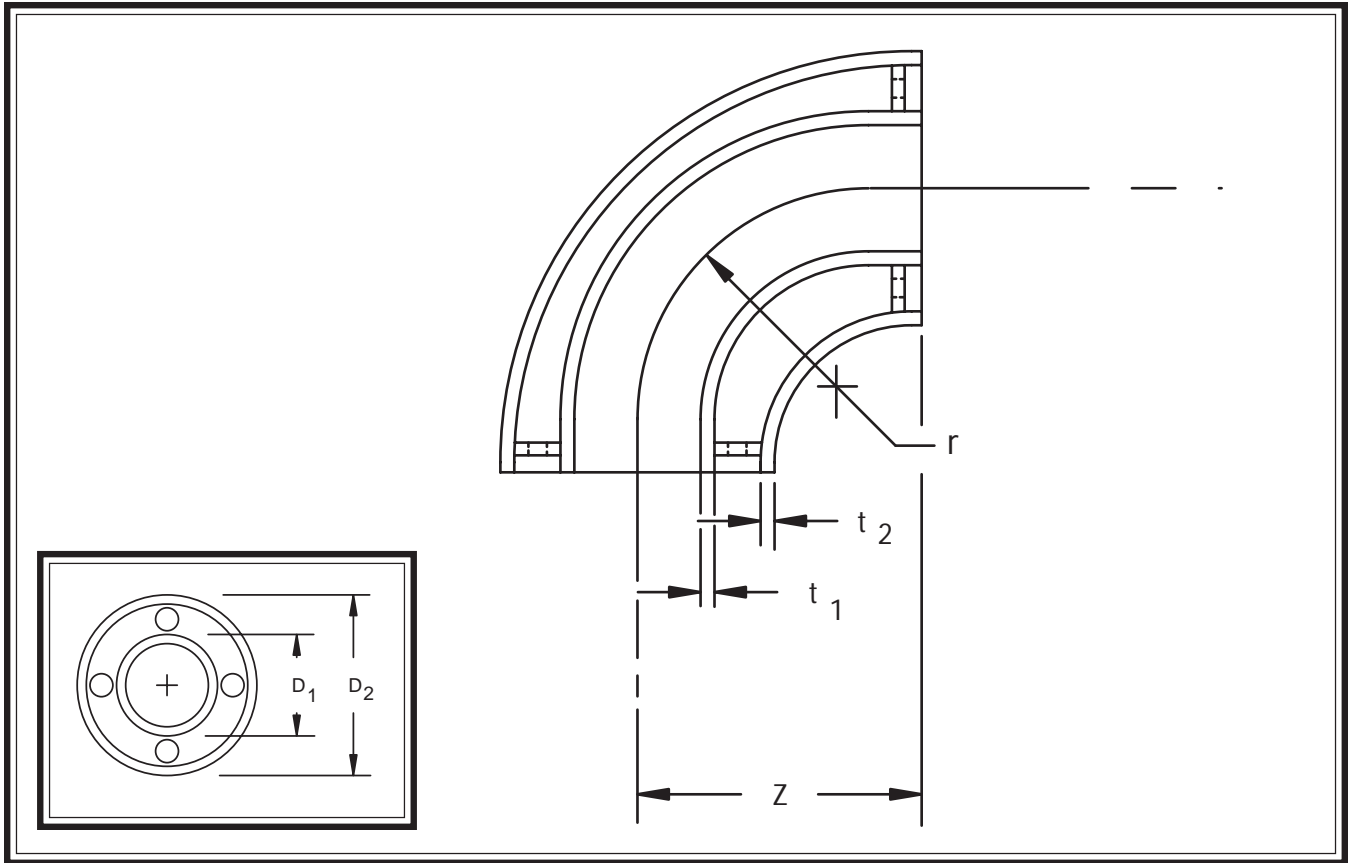
## 90° ELBOW

Description: 90° Elbow

Material: Polypropylene

Execution: Molded

Connection: Butt-Fusion



NOMINAL PIPE SIZE		SDR 11		SDR 17.6		SDR 32.5		r	Z	PART NUMBERS	
		D <sub>1</sub>	t <sub>1</sub>	D <sub>2</sub>	t <sub>2</sub>	D <sub>2</sub>	t <sub>2</sub>			SDR 11 X 17.6	SDR 11 X 32.5
INNER (IN.)	OUTER (IN.)	(IN.)	(IN.)	(IN.)	(IN.)	(IN.)	(IN.)	(IN.)	(IN.)		
1	4	1.26	.12	4.33	.25	4.33	.138	1.89	4.68	9901088	9901099
1 1/2	4	1.97	.18	4.33	.25	4.33	.138	2.95	4.68	9901089	9901100
2	4	2.48	.23	4.33	.25	4.33	.138	3.74	4.68	9901090	9901101
2	6	2.48	.23	6.30	.36	6.30	.197	3.74	6.53	9901091	9901102
2 1/2	6	2.95	.27	6.30	.36	6.30	.197	4.45	6.53	9901092	9901103
3	6	3.54	.32	6.30	.36	6.30	.197	5.31	6.53	9901093	9901104
4	8	4.33	.39	7.87	.45	7.87	.244	6.50	8.11	9901094	9901105
6	10	6.30	.57	9.84	.56	9.84	.307	9.45	9.96	9901095	9901106
8	12	7.87	.72	12.40	.70	12.40	.386	11.81	10.43	9901096	9901107
10	14	9.84	.90	13.98	.79	13.98	.437	14.76	13.39	9901097	9901108
12	16	12.40	1.13	15.75	.89	15.75	.488	18.62	13.78	9901098	9901109

# DoubleQuik - Dimensional Data

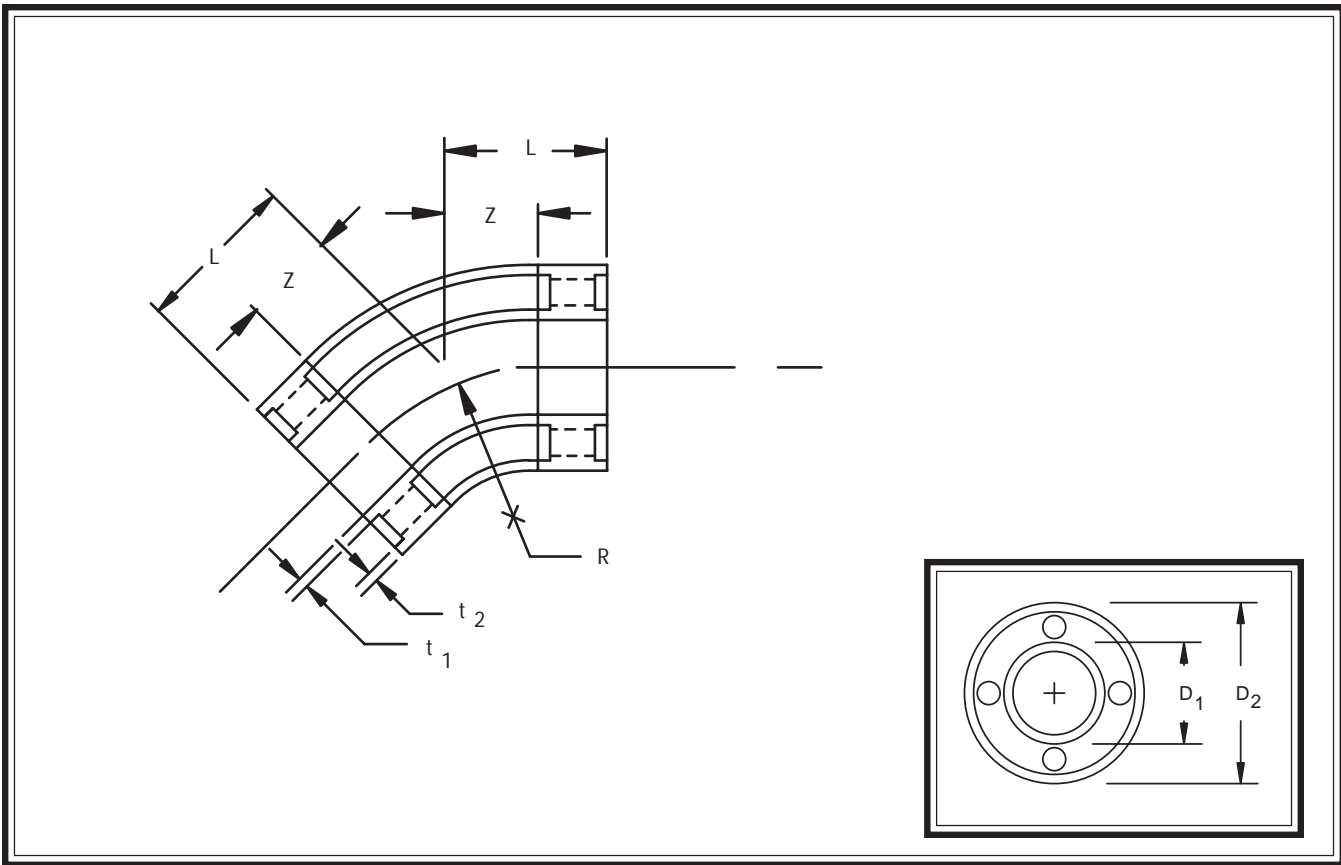
## ANCHORED 45° ELBOW

Description: Anchored 45° Elbow

Material: Polypropylene

Execution: Molded

Connection: Butt-Fusion



NOMINAL PIPE SIZE		SDR 11		SDR 17.6		SDR 17.6		r	Z	L	PART NUMBERS	
		D <sub>1</sub>	t <sub>1</sub>	D <sub>1</sub>	t <sub>1</sub>	D <sub>2</sub>	t <sub>2</sub>				SDR 11 X 17.6	SDR 17.6 X 17.6
INNER (IN.)	OUTER (IN.)	(IN.)	(IN.)	(IN.)	(IN.)	(IN.)	(IN.)	(IN.)	(IN.)	(IN.)		
1	4	1.26	.12	1.26	.07	4.33	.25	1.181	3.44	5.19	9901132	9901143
1 1/2	4	1.97	.18	1.97	.11	4.33	.25	1.969	3.44	5.44	9901133	9901144
2	4	2.48	.23	2.48	.14	4.33	.25	2.480	3.44	5.57	9901134	9901145
2	6	2.48	.23	2.48	.14	6.30	.36	2.480	4.75	6.88	9901135	9901146
2 1/2	6	2.95	.27	2.95	.17	6.30	.36	2.874	4.75	6.88	9901136	9901147
3	6	3.54	.32	3.54	.20	6.30	.36	3.465	4.75	6.88	9901137	9901148
4	8	4.33	.39	4.33	.25	7.87	.45	4.252	5.86	8.11	9901138	9901149
6	10	6.30	.57	6.30	.36	9.84	.56	6.100	7.07	9.57	9901139	9901150
8	12	7.87	.72	7.87	.45	12.40	.70	7.680	7.49	10.24	9901140	9901151
10	14	9.84	.90	9.84	.56	13.98	.79	9.45	9.93	12.93	9901141	9901152
12	16	12.40	1.13	12.4	.70	15.75	.89	10.04	10.32	13.57	9901142	9901153

# DoubleQuik - Dimensional Data

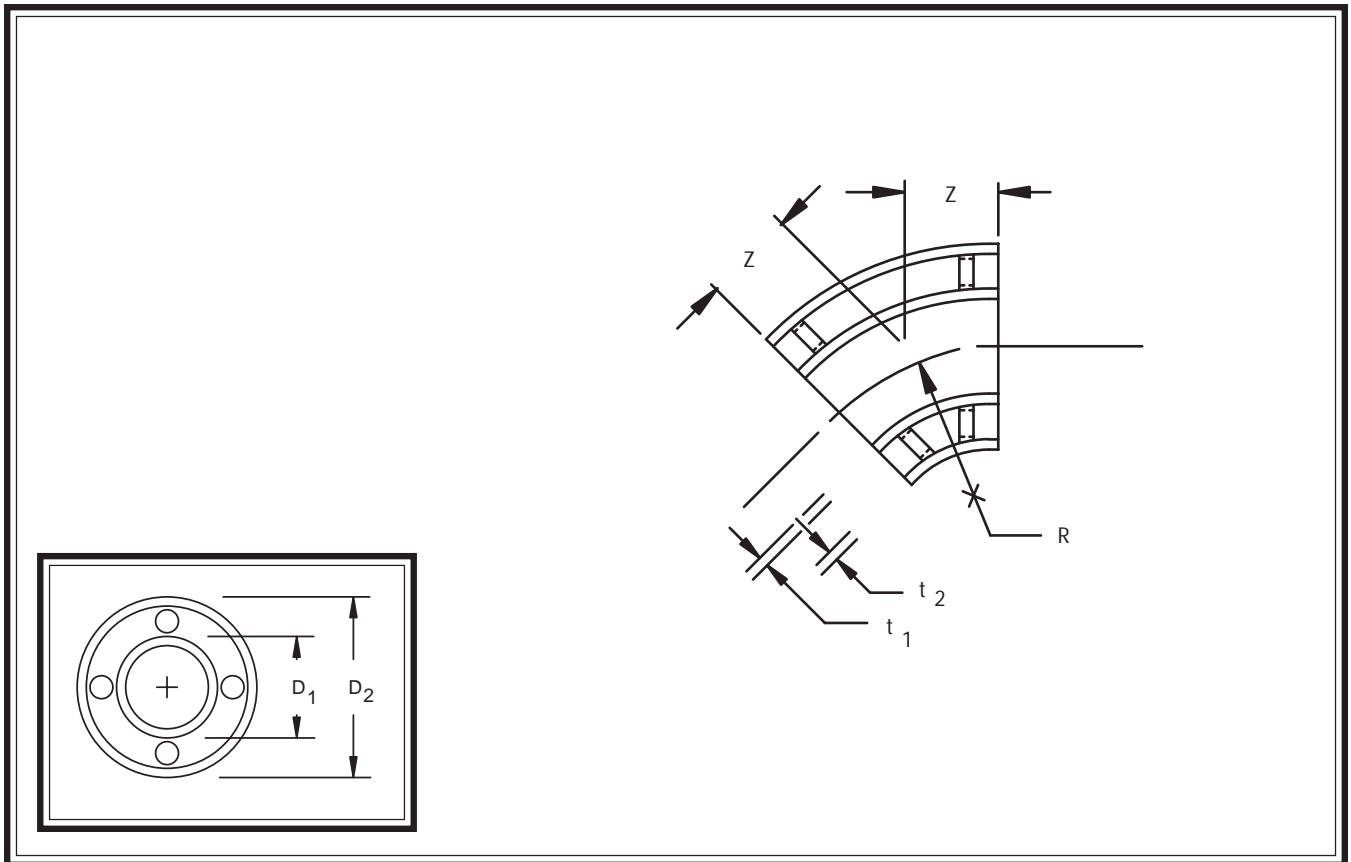
## 45° ELBOW

Description: 45° Elbow

Material: Polypropylene

Execution: Molded

Connection: Butt-Fusion



NOMINAL PIPE SIZE		SDR 11		SDR 17.6		SDR 17.6		r	Z	PART NUMBERS	
		D <sub>1</sub>	t <sub>1</sub>	D <sub>1</sub>	t <sub>1</sub>	D <sub>2</sub>	t <sub>2</sub>			SDR 11 X 17.6	SDR 17.6 X 17.6
INNER (IN.)	OUTER (IN.)	(IN.)	(IN.)	(IN.)	(IN.)	(IN.)	(IN.)	(IN.)	(IN.)		
1	4	1.26	.12	1.26	.07	4.33	.25	1.181	3.44	9901154	9901165
1 1/2	4	1.97	.18	1.97	.11	4.33	.25	1.969	3.44	9901155	9901166
2	4	2.48	.23	2.48	.14	4.33	.25	2.480	3.44	9901156	9901167
2	6	2.48	.23	2.48	.14	6.30	.36	2.480	4.75	9901157	9901168
2 1/2	6	2.95	.27	2.95	.17	6.30	.36	2.874	4.75	9901158	9901169
3	6	3.54	.32	3.54	.20	6.30	.36	3.465	4.75	9901159	9901170
4	8	4.33	.39	4.33	.25	7.87	.45	4.252	5.86	9901160	9901171
6	10	6.30	.57	6.30	.36	9.84	.56	6.100	7.07	9901161	9901172
8	12	7.87	.72	7.87	.45	12.40	.70	7.680	7.49	9901162	9901173
10	14	9.84	.90	9.84	.56	13.98	.79	9.45	9.93	9901163	9901174
12	16	12.40	1.13	12.4	.70	15.75	.89	10.04	10.32	9901164	9901175

# DoubleQuik - Dimensional Data

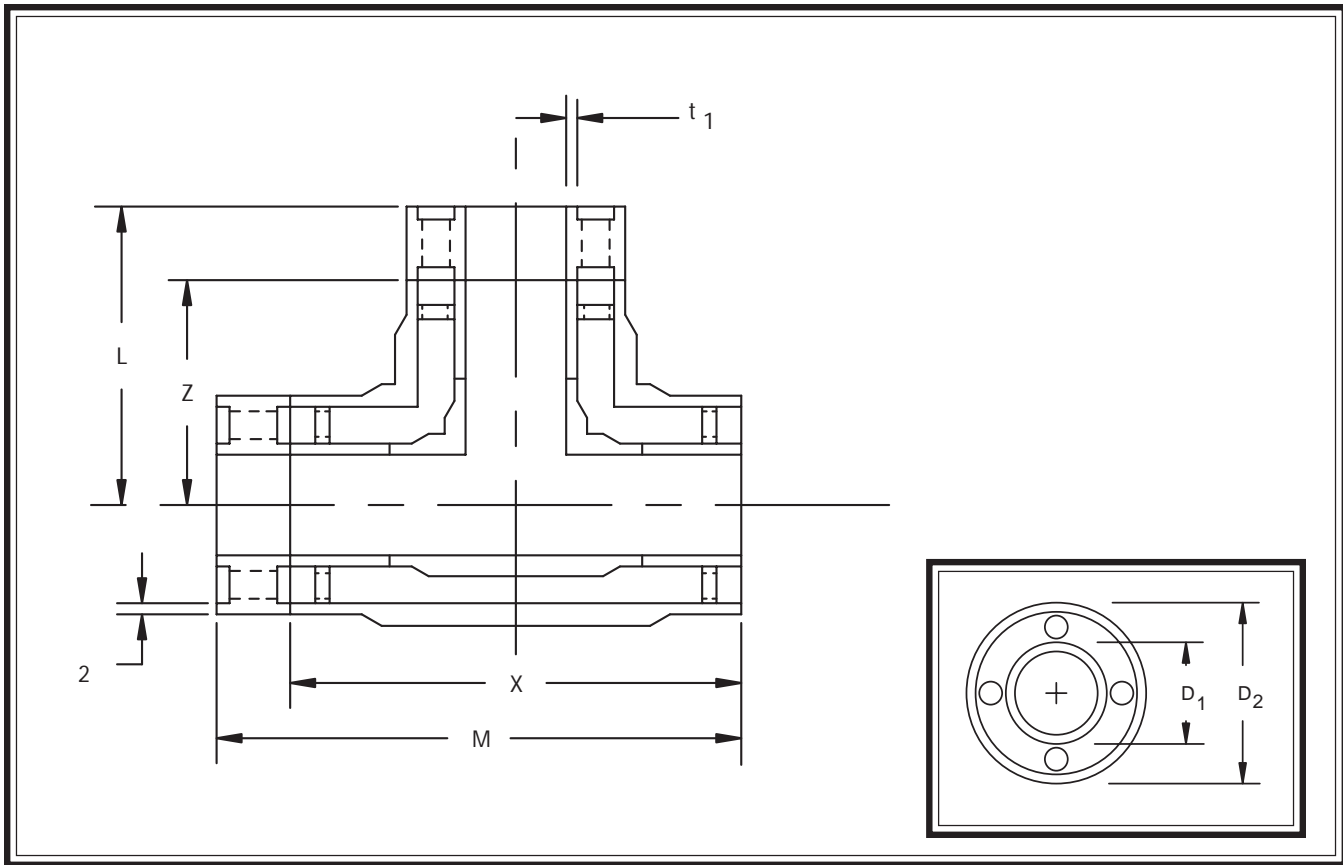
## ANCHORED TEE

Description: Anchored Tee

Material: Polypropylene

Execution: Molded

Connection: Butt-Fusion



NOMINAL PIPE SIZE		SDR 11		SDR 17.6		SDR 32.5		Z	L	X	M	PART NUMBERS	
		D <sub>1</sub>	t <sub>1</sub>	D <sub>2</sub>	t <sub>2</sub>	D <sub>2</sub>	t <sub>2</sub>					SDR 11 X 17.6	SDR 11 X 32.5
INNER (IN.)	OUTER (IN.)	(IN.)	(IN.)	(IN.)	(IN.)	(IN.)	(IN.)	(IN.)	(IN.)	(IN.)	(IN.)		
1	4	1.26	.12	4.33	.25	4.33	.138	4.72	6.47	9.45	11.20	9901176	9901187
1 1/2	4	1.97	.18	4.33	.25	4.33	.138	4.72	6.72	9.45	11.45	9901177	9901188
2	4	2.48	.23	4.33	.25	4.33	.138	4.72	6.72	9.45	11.45	9901178	9901189
2	6	2.48	.23	6.30	.36	6.30	.197	6.50	8.63	12.99	15.12	9901179	9901190
2 1/2	6	2.95	.27	6.30	.36	6.30	.197	6.50	8.63	12.99	15.12	9901180	9901191
3	6	3.54	.32	6.30	.36	6.30	.197	6.50	8.63	12.99	15.12	9901181	9901192
4	8	4.33	.39	7.87	.45	7.87	.244	7.87	10.12	15.55	17.80	9901182	9901193
6	10	6.30	.57	9.84	.56	9.84	.307	8.66	11.16	17.52	20.02	9901183	9901194
8	12	7.87	.72	12.40	.70	12.40	.386	10.83	13.58	21.65	24.40	9901184	9901195
10	14	9.84	.90	13.98	.79	13.98	.437	13.54	16.54	27.09	30.09	9901185	9901196
12	16	12.40	1.13	15.75	.89	15.75	.488	13.54	16.79	27.09	30.34	9901186	9901197

# DoubleQuik - Dimensional Data

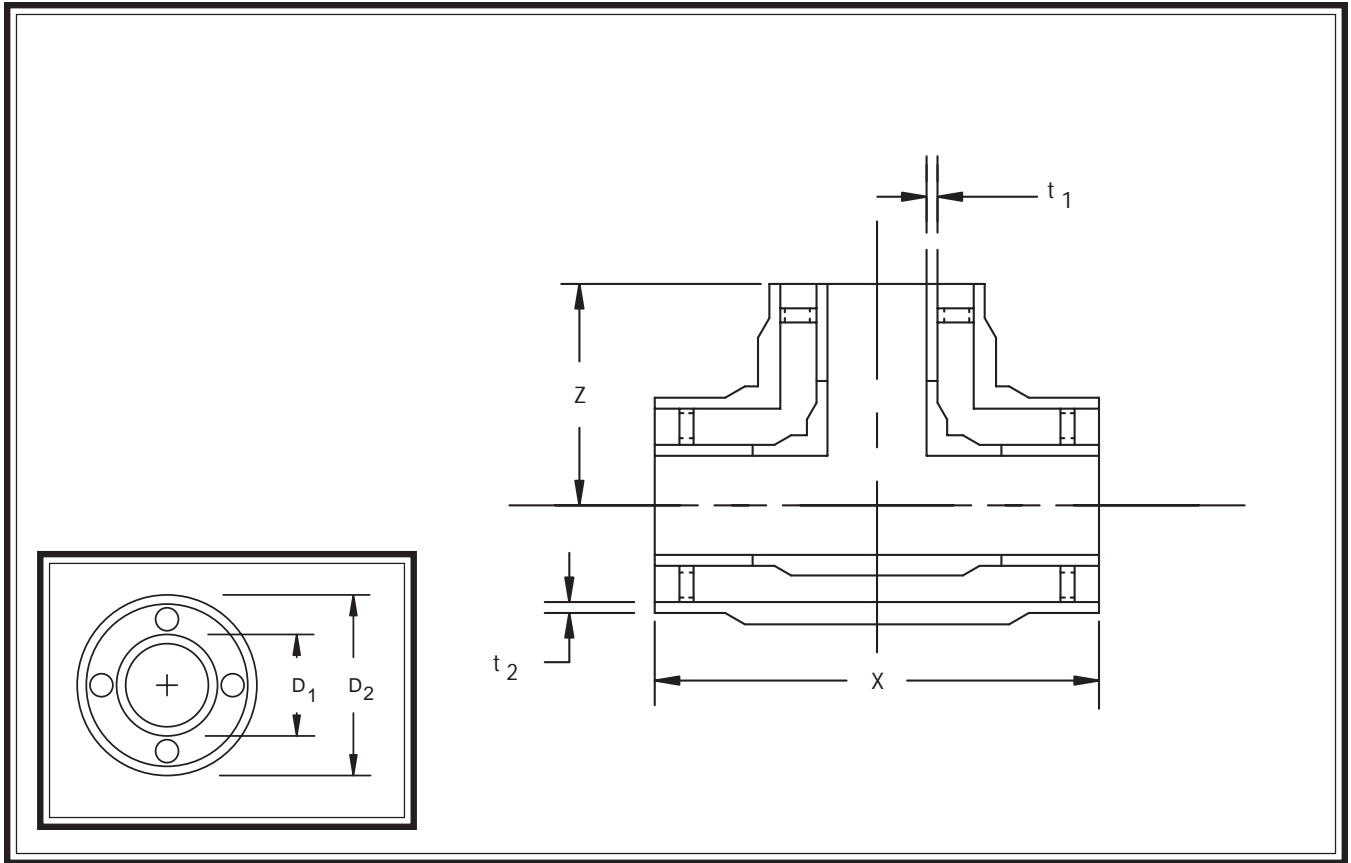
## TEE

Description: Tee

Material: Polypropylene

Execution: Molded

Connection: Butt-Fusion



NOMINAL PIPE SIZE		SDR 11		SDR 17.6		SDR 32.5		Z (IN.)	X (IN.)	PART NUMBERS	
INNER (IN.)	OUTER (IN.)	D <sub>1</sub> (IN.)	t <sub>1</sub> (IN.)	D <sub>2</sub> (IN.)	t <sub>2</sub> (IN.)	D <sub>2</sub> (IN.)	t <sub>2</sub> (IN.)			SDR 11 X 17.6	SDR 11 X 32.5
1	4	1.26	.12	4.33	.25	4.33	.138	4.72	9.45	9901220	9901231
1 1/2	4	1.97	.18	4.33	.25	4.33	.138	4.72	9.45	9901221	9901232
2	4	2.48	.23	4.33	.25	4.33	.138	4.72	9.45	9901222	9901233
2	6	2.48	.23	6.30	.36	6.30	.197	6.50	12.99	9901223	9901234
2 1/2	6	2.95	.27	6.30	.36	6.30	.197	6.50	12.99	9901224	9901235
3	6	3.54	.32	6.30	.36	6.30	.197	6.50	12.99	9901225	9901236
4	8	4.33	.39	7.87	.45	7.87	.244	7.87	15.55	9901226	9901237
6	10	6.30	.57	9.84	.56	9.84	.307	8.66	17.52	9901227	9901238
8	12	7.87	.72	12.40	.70	12.40	.386	10.83	21.65	9901228	9901239
10	14	9.84	.90	13.98	.79	13.98	.437	13.54	27.09	9901229	9901240
12	16	12.40	1.13	15.75	.89	15.75	.488	13.54	27.09	9901230	9901241

# DoubleQuik - Dimensional Data

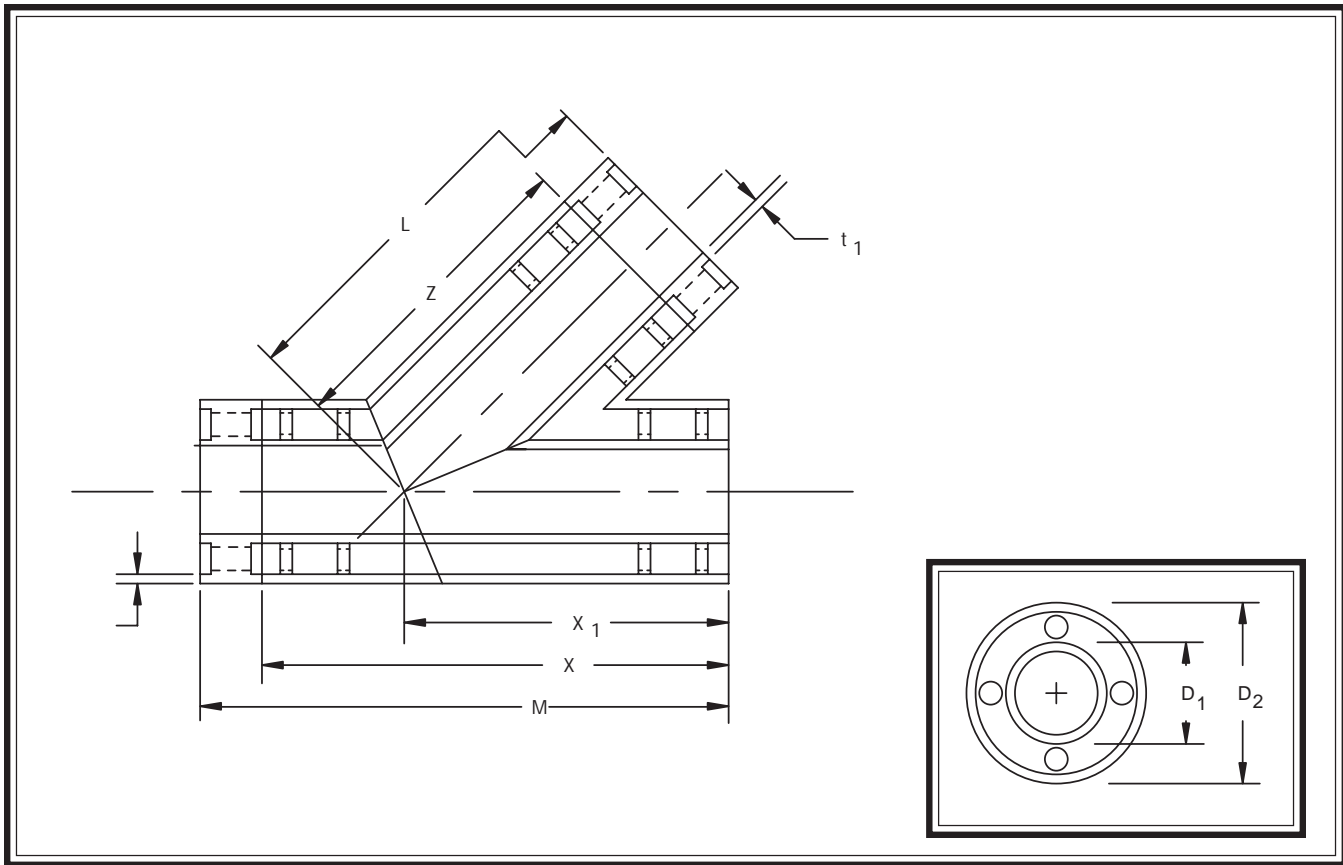
## ANCHORED LATERAL

Description: Anchored Lateral

Material: Polypropylene

Execution: Molded

Connection: Butt-Fusion



NOMINAL PIPE SIZE		SDR 11		SDR 17.6		SDR 32.5							PART NUMBERS	
INNER (IN.)	OUTER (IN.)	D <sub>1</sub>	t <sub>1</sub>	D <sub>2</sub>	t <sub>2</sub>	D <sub>2</sub>	t <sub>2</sub>	X <sub>1</sub>	X	M	Z	L	SDR 11 X 17.6	SDR 11 X 32.5
1	4	1.26	.12	4.33	.25	4.33	.138	16.0	24.0	25.75	16.0	17.75	9901264	9901275
1 1/2	4	1.97	.18	4.33	.25	4.33	.138	16.0	24.0	26.00	16.0	18.00	9901265	9901276
2	4	2.48	.23	4.33	.25	4.33	.138	16.0	24.0	26.00	16.0	18.00	9901266	9901277
2	6	2.48	.23	6.30	.36	6.30	.197	20.0	28.0	30.13	20.0	22.13	9901267	9901278
2 1/2	6	2.95	.27	6.30	.36	6.30	.197	20.0	28.0	30.13	20.0	22.13	6801268	9901279
3	6	3.54	.32	6.30	.36	6.30	.197	20.0	28.0	30.13	20.0	22.13	9901269	9901280
4	8	4.33	.39	7.87	.45	7.87	.244	22.0	32.0	34.25	22.0	24.25	9901270	9901281
6	10	6.30	.57	9.84	.56	9.84	.307	26.0	36.0	38.50	26.0	28.50	9901271	9901282
8	12	7.87	.72	12.40	.70	12.40	.386	28.0	40.0	42.75	28.0	30.75	9901272	9901283
10	14	9.84	.90	13.98	.79	13.98	.437	30.0	42.0	45.00	30.0	33.00	9901273	9901284
12	16	12.40	1.13	15.75	.89	15.75	.488	32.0	46.0	49.25	32.0	35.25	9901274	9901285

# DoubleQuik - Dimensional Data

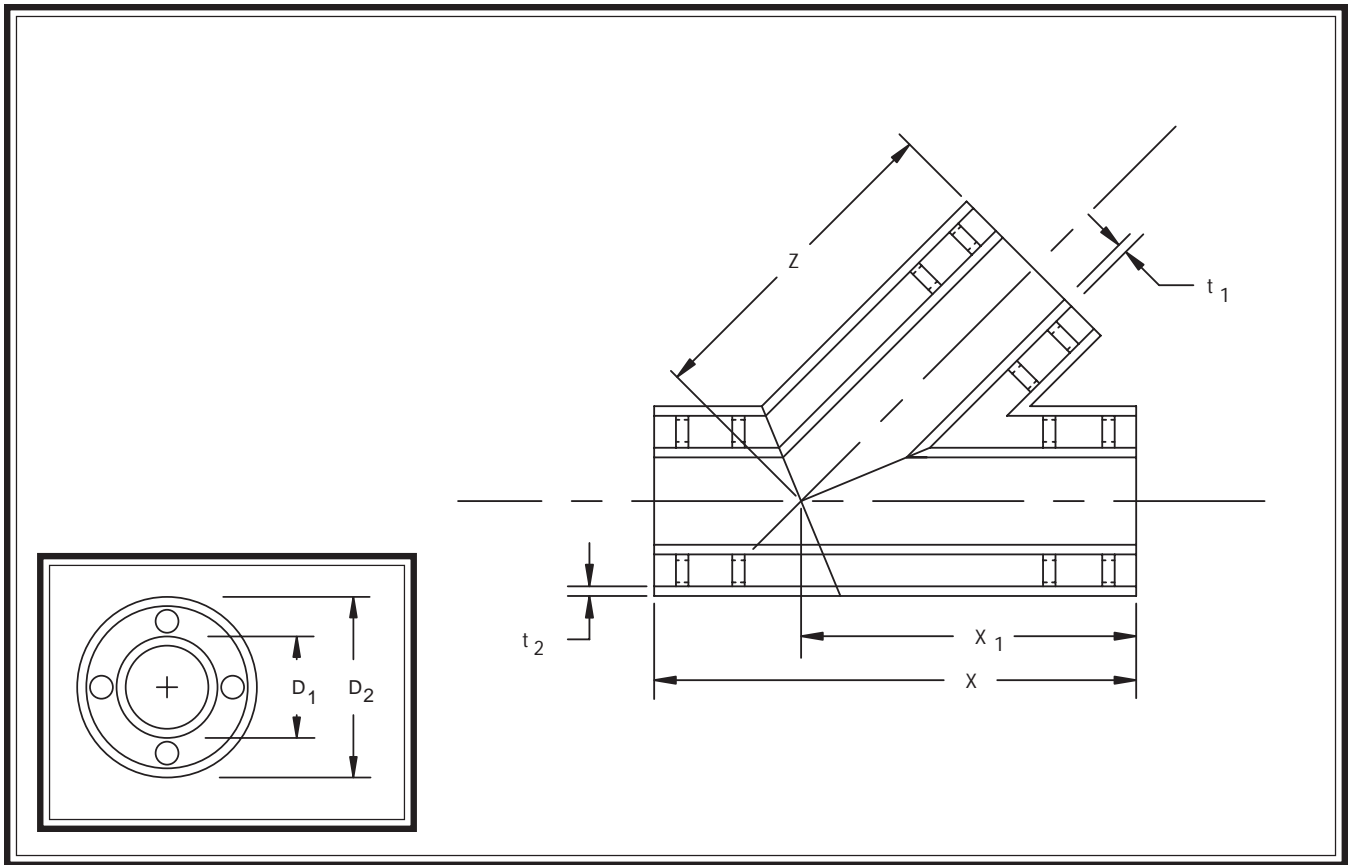
## LATERAL

Description: Lateral

Material: Polypropylene

Execution: Molded

Connection: Butt-Fusion



NOMINAL PIPE SIZE		SDR 11		SDR 17.6		SDR 32.5		X <sub>1</sub> (IN.)	X (IN.)	Z (IN.)	PART NUMBERS	
INNER (IN.)	OUTER (IN.)	D <sub>1</sub> (IN.)	t <sub>1</sub> (IN.)	D <sub>2</sub> (IN.)	t <sub>2</sub> (IN.)	D <sub>2</sub> (IN.)	t <sub>2</sub> (IN.)				SDR 11 X 17.6	SDR 11 X 32.5
1	4	1.26	.12	4.33	.25	4.33	.138	16.0	24.0	16.0	9901308	9901319
1 1/2	4	1.97	.18	4.33	.25	4.33	.138	16.0	24.0	16.0	9901309	9901320
2	4	2.48	.23	4.33	.25	4.33	.138	16.0	24.0	16.0	9901310	9901321
2	6	2.48	.23	6.30	.36	6.30	.197	20.0	28.0	20.0	9901311	9901322
2 1/2	6	2.95	.27	6.30	.36	6.30	.197	20.0	28.0	20.0	9901312	9901323
3	6	3.54	.32	6.30	.36	6.30	.197	20.0	28.0	20.0	9901313	9901324
4	8	4.33	.39	7.87	.45	7.87	.244	22.0	32.0	22.0	9901314	9901325
6	10	6.30	.57	9.84	.56	9.84	.307	26.0	36.0	26.0	9901315	9901326
8	12	7.87	.72	12.40	.70	12.40	.386	28.0	40.0	28.0	9901316	9901327
10	14	9.84	.90	13.98	.79	13.98	.437	30.0	42.0	30.0	9901317	9901328
12	16	12.40	1.13	15.75	.89	15.75	.488	32.0	46.0	32.0	9901318	9901329

# DoubleQuik - Dimensional Data

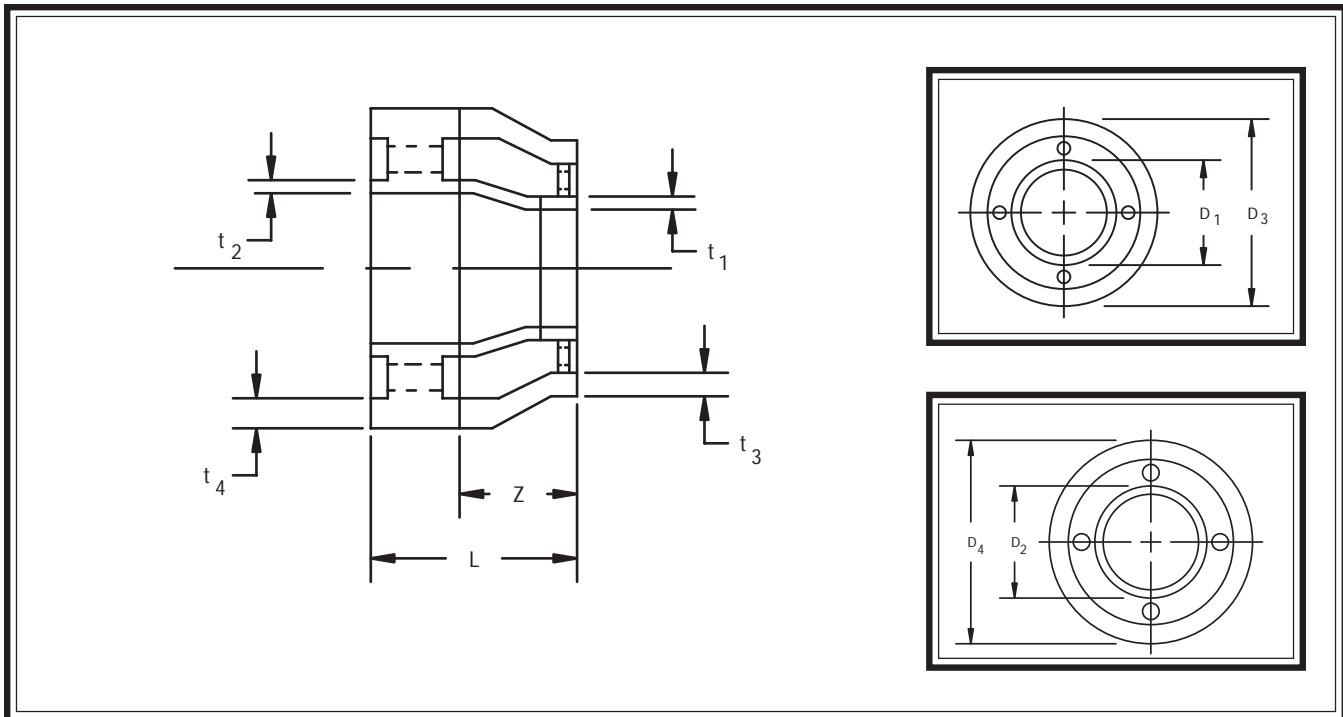
## ANCHORED REDUCER

Description: Anchored Reducer

Material: Polypropylene

Execution: Molded

Connection: Butt-Fusion



NOMINAL PIPE SIZE		SDR 11		SDR 11		SDR 17.6		SDR 17.6		SDR 17.6		SDR 17.6		Z	L	PART NUMBERS	
		D <sub>1</sub>	t <sub>1</sub>	D <sub>2</sub>	t <sub>2</sub>	D <sub>1</sub>	t <sub>1</sub>	D <sub>2</sub>	t <sub>2</sub>	D <sub>3</sub>	t <sub>3</sub>	D <sub>4</sub>	t <sub>4</sub>			SDR 11 X 17.6	SDR 17.6 X 17.6
INNER (IN.)	OUTER (IN.)	(IN.)	(IN.)	(IN.)	(IN.)	(IN.)	(IN.)	(IN.)	(IN.)	(IN.)	(IN.)	(IN.)	(IN.)	(IN.)	(IN.)		
1 1/2 X 1	4 X 4	1.26	.12	1.97	.18	1.26	.07	1.97	.11	4.33	.25	4.33	.25	3.35	5.35	9901348	9901368
2 X 1	6 X 4	1.26	.12	2.48	.23	1.26	.07	2.48	.14	4.33	.25	6.30	.36	3.35	5.48	9901349	9901369
2 X 1 1/2	6 X 4	1.97	.18	2.48	.23	1.97	.11	2.48	.14	4.33	.25	6.30	.36	3.35	5.48	9901350	9901370
2 1/2 X 1 1/2	6 X 4	1.97	.18	2.95	.27	1.97	.11	2.95	.17	4.33	.25	6.30	.36	3.35	5.48	9901351	9901371
2 1/2 X 2	6 X 4	2.48	.23	2.95	.27	2.48	.14	2.95	.17	4.33	.25	6.30	.36	3.35	5.48	9901352	9901372
2 1/2 X 2	6 X 6	2.48	.23	2.95	.27	2.48	.14	2.95	.17	4.33	.25	6.30	.36	3.35	5.48	9901353	9901373
3 X 1 1/2	6 X 4	1.97	.18	3.54	.32	1.97	.11	3.54	.20	4.33	.25	6.30	.36	3.35	5.48	9901354	9901374
3 X 2	6 X 4	2.48	.23	3.54	.32	2.48	.14	3.54	.20	4.33	.25	6.30	.36	3.35	5.48	9901355	9901375
3 X 2	6 X 6	2.48	.23	3.54	.32	2.48	.14	3.54	.20	6.30	.36	6.30	.36	3.35	5.48	9901356	9901376
3 X 2 1/2	6 X 6	2.95	.27	3.54	.32	2.95	.17	3.54	.20	6.30	.36	6.30	.36	3.35	5.48	9901357	9901377
4 X 2	8 X 6	2.48	.23	4.33	.39	2.48	.14	4.33	.25	6.30	.36	7.87	.45	3.07	5.32	9901358	9901378
4 X 2 1/2	8 X 6	2.95	.27	4.33	.39	2.95	.17	4.33	.25	6.30	.36	7.87	.45	3.07	5.32	9901359	9901379
4 X 3	8 X 6	3.54	.32	4.33	.39	3.54	.20	4.33	.25	6.30	.36	7.87	.45	3.07	5.32	9901360	9901380
6 X 3	10 X 6	3.54	.32	6.30	.57	3.54	.20	6.30	.36	6.30	.36	9.84	.56	4.92	7.42	9901361	9901381
6 X 4	10 X 8	4.33	.39	6.30	.57	4.33	.25	6.30	.36	7.87	.45	9.84	.56	3.35	5.85	9901362	9901382
8 X 6	12 X 10	6.30	.57	7.87	.72	6.30	.36	7.87	.45	9.84	.56	12.40	.70	3.54	6.29	9901363	9901383
10 X 6	14 X 10	6.30	.57	9.84	.90	6.30	.36	9.84	.56	9.84	.56	13.98	.79	5.12	8.12	9901364	9901384
10 X 8	14 X 12	7.87	.72	9.84	.90	7.87	.45	9.84	.56	12.40	.70	13.98	.79	2.76	5.76	9901365	9901385
12 X 8	16 X 12	7.87	.72	12.40	1.13	7.87	.45	12.40	.70	12.40	.70	15.75	.89	4.53	7.78	9901366	9901386
12 X 10	16 X 14	9.84	.90	12.40	1.13	9.84	.56	12.40	.70	13.98	.79	15.75	.89	3.15	6.40	9901367	9901387

# DoubleQuik - Dimensional Data

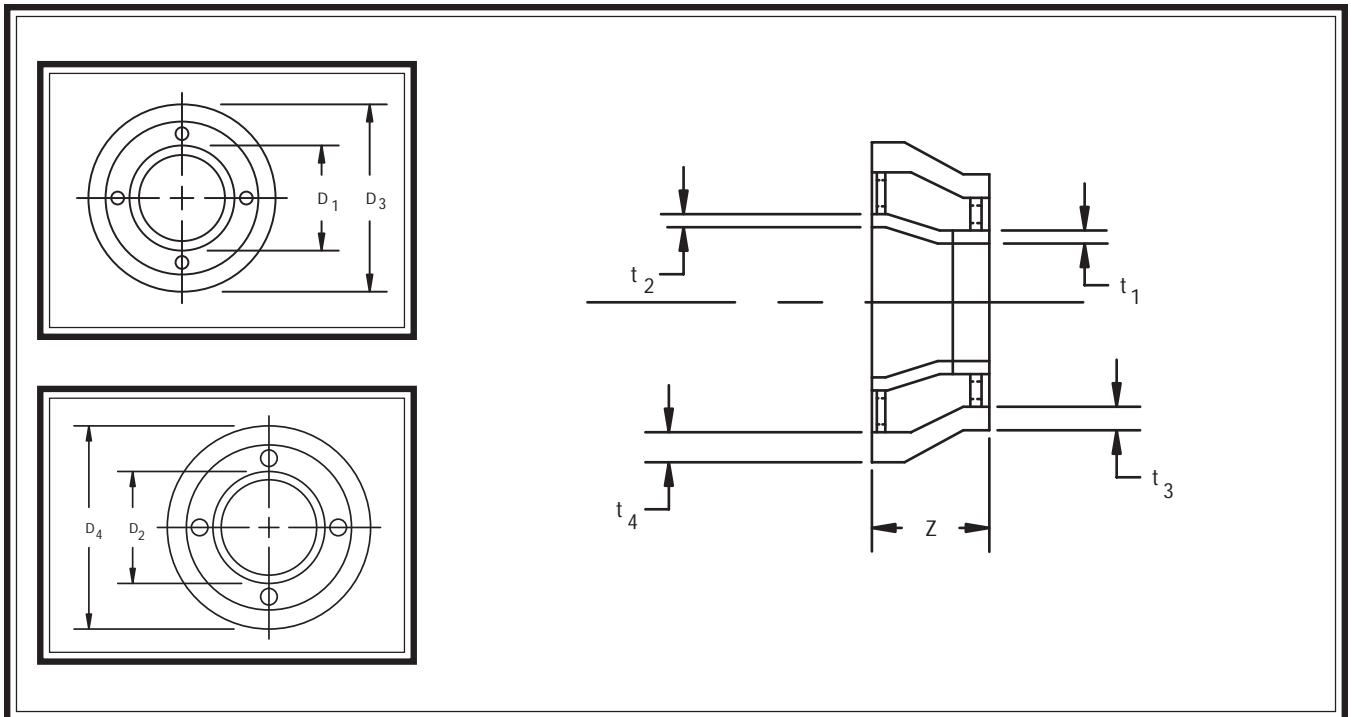
## REDUCER

Description: Reducer

Material: Polypropylene

Execution: Molded

Connection: Butt-Fusion



NOMINAL PIPE SIZE		SDR 11		SDR 11		SDR 17.6		SDR 17.6		SDR 17.6		SDR 17.6		Z	PART NUMBERS	
		D <sub>1</sub> (IN.)	t <sub>1</sub> (IN.)	D <sub>2</sub> (IN.)	t <sub>2</sub> (IN.)	D <sub>1</sub> (IN.)	t <sub>1</sub> (IN.)	D <sub>2</sub> (IN.)	t <sub>2</sub> (IN.)	D <sub>3</sub> (IN.)	t <sub>3</sub> (IN.)	D <sub>4</sub> (IN.)	t <sub>4</sub> (IN.)		SDR 11 X 17.6	SDR 17.6 X 17.6
1 1/2 X 1	4 X 4	1.26	.12	1.97	.18	1.26	.07	1.97	.11	4.33	.25	4.33	.25	3.35	9901638	9901658
2 X 1	6 X 4	1.26	.12	2.48	.23	1.26	.07	2.48	.14	4.33	.25	6.30	.36	3.35	9901639	9901659
2 X 1 1/2	6 X 4	1.97	.18	2.48	.23	1.97	.11	2.48	.14	4.33	.25	6.30	.36	3.35	9901640	9901660
2 1/2 X 1 1/2	6 X 4	1.97	.18	2.95	.27	1.97	.11	2.95	.17	4.33	.25	6.30	.36	3.35	9901641	9901661
2 1/2 X 2	6 X 4	2.48	.23	2.95	.27	2.48	.14	2.95	.17	4.33	.25	6.30	.36	3.35	9901642	9901662
2 1/2 X 2	6 X 6	2.48	.23	2.95	.27	2.48	.14	2.95	.17	4.33	.25	6.30	.36	3.35	9901643	9901663
3 X 1 1/2	6 X 4	1.97	.18	3.54	.32	1.97	.11	3.54	.20	4.33	.25	6.30	.36	3.35	9901644	9901664
3 X 2	6 X 4	2.48	.23	3.54	.32	2.48	.14	3.54	.20	4.33	.25	6.30	.36	3.35	9901645	9901665
3 X 2	6 X 6	2.48	.23	3.54	.32	2.48	.14	3.54	.20	6.30	.36	6.30	.36	3.35	9901646	9901666
3 X 2 1/2	6 X 6	2.95	.27	3.54	.32	2.95	.17	3.54	.20	6.30	.36	6.30	.36	3.35	9901647	9901667
4 X 2	8 X 6	2.48	.23	4.33	.39	2.48	.14	4.33	.25	6.30	.36	7.87	.45	3.07	9901648	9901668
4 X 2 1/2	8 X 6	2.95	.27	4.33	.39	2.95	.17	4.33	.25	6.30	.36	7.87	.45	3.07	9901649	9901669
4 X 3	8 X 6	3.54	.32	4.33	.39	3.54	.20	4.33	.25	6.30	.36	7.87	.45	3.07	9901650	9901670
6 X 3	10 X 6	3.54	.32	6.30	.57	3.54	.20	6.30	.36	6.30	.36	9.84	.56	4.92	9901651	9901671
6 X 4	10 X 8	4.33	.39	6.30	.57	4.33	.25	6.30	.36	7.87	.45	9.84	.56	3.35	9901652	9901672
8 X 6	12 X 10	6.30	.57	7.87	.72	6.30	.36	7.87	.45	9.84	.56	12.40	.70	3.54	9901653	9901673
10 X 6	14 X 10	6.30	.57	9.84	.90	6.30	.36	9.84	.56	9.84	.56	13.98	.79	5.12	9901654	9901674
10 X 8	14 X 12	7.87	.72	9.84	.90	7.87	.45	9.84	.56	12.40	.70	13.98	.79	2.76	9901655	9901675
12 X 8	16 X 12	7.87	.72	12.40	1.13	7.87	.45	12.40	.70	12.40	.70	15.75	.89	4.53	9901656	9901676
12 X 10	16 X 14	9.84	.90	12.40	1.13	9.84	.56	12.40	.70	13.98	.79	15.75	.89	3.15	9901657	9901677

# DoubleQuik - Dimensional Data

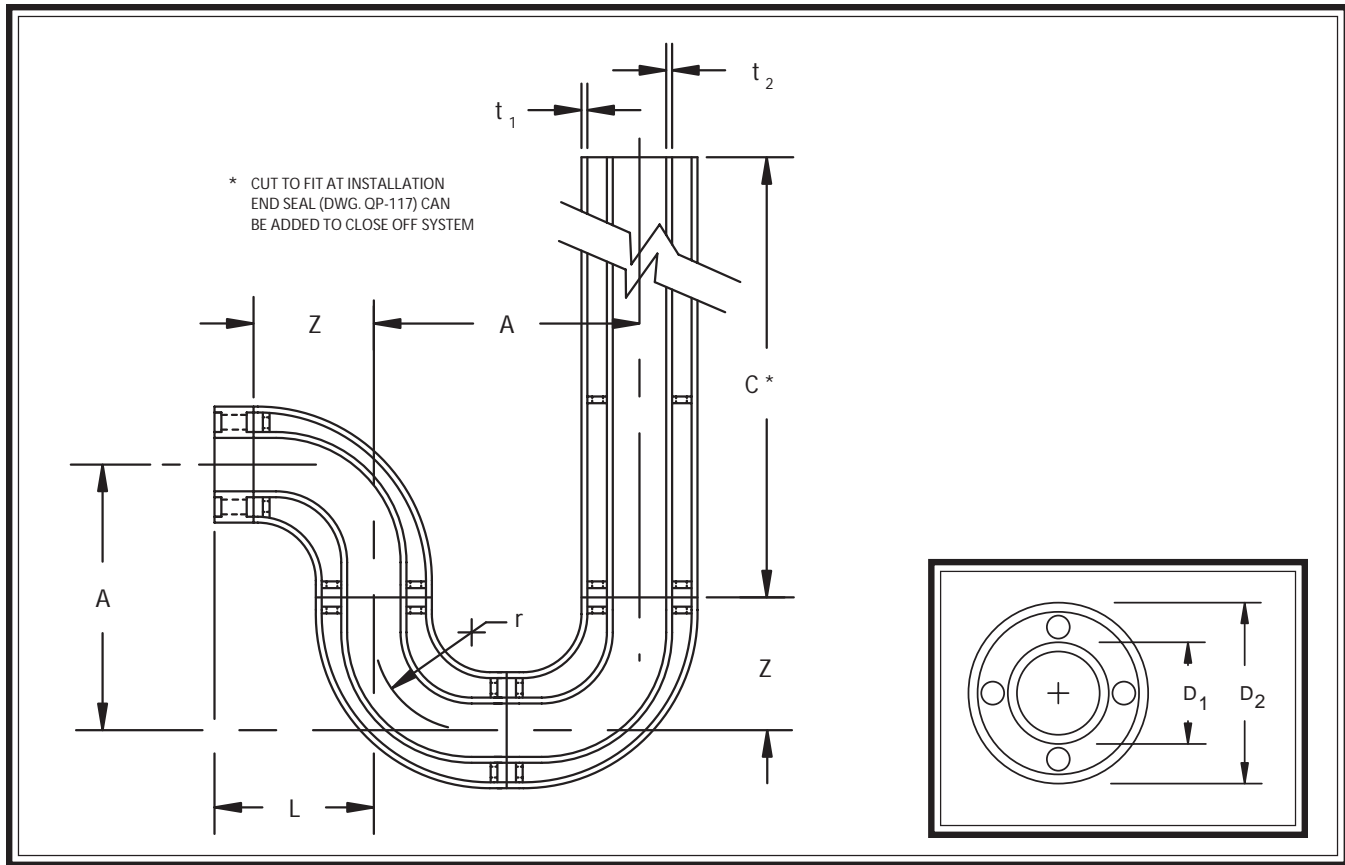
## ANCHORED P-TRAP

Description: Anchored P-Trap

Material: Polypropylene

Execution: Molded

Connection: Butt-Fusion



NOMINAL PIPE SIZE		SDR 11		SDR 17.6		SDR 32.5		r	Z	L	A	C	PART NUMBERS	
		D <sub>1</sub> (IN.)	t <sub>1</sub> (IN.)	D <sub>2</sub> (IN.)	t <sub>2</sub> (IN.)	D <sub>2</sub> (IN.)	t <sub>2</sub> (IN.)						SDR 11 X 17.6	SDR 11 X 32.5
INNER (IN.)	OUTER (IN.)	(IN.)	(IN.)	(IN.)	(IN.)	(IN.)	(IN.)	(IN.)	(IN.)	(IN.)	(IN.)	(IN.)		
1	4	1.26	.12	4.33	.25	4.33	.138	1.89	4.68	6.43	9.36	53.0	9901432	9901443
1 1/2	4	1.97	.18	4.33	.25	4.33	.138	2.95	4.68	6.68	9.36	53.0	9901433	9901444
2	4	2.48	.23	4.33	.25	4.33	.138	3.74	4.68	6.81	9.36	54.0	9901434	9901445
2	6	2.48	.23	6.30	.36	6.30	.197	3.74	6.53	8.65	13.06	55.0	9901435	9901446
2 1/2	6	2.95	.27	6.30	.36	6.30	.197	4.45	6.53	8.65	13.06	55.0	9901436	9901447
3	6	3.54	.32	6.30	.36	6.30	.197	5.31	6.53	8.65	13.06	55.0	9901437	9901448
4	8	4.33	.39	7.87	.45	7.87	.244	6.50	8.11	10.36	16.22	57.0	9901438	9901449
6	10	6.30	.57	9.84	.56	9.84	.307	9.45	9.96	12.46	19.92	58.0	9901439	9901450
8	12	7.87	.72	12.40	.70	12.40	.386	11.81	10.43	13.18	20.86	59.0	9901440	9901451
10	14	9.84	.90	13.98	.79	13.98	.437	14.76	13.39	16.39	26.78	60.0	9901441	9901452
12	16	12.40	1.13	15.75	.89	15.75	.488	18.62	13.78	17.03	27.56	60.0	9901442	9901453

# DoubleQuik - Dimensional Data

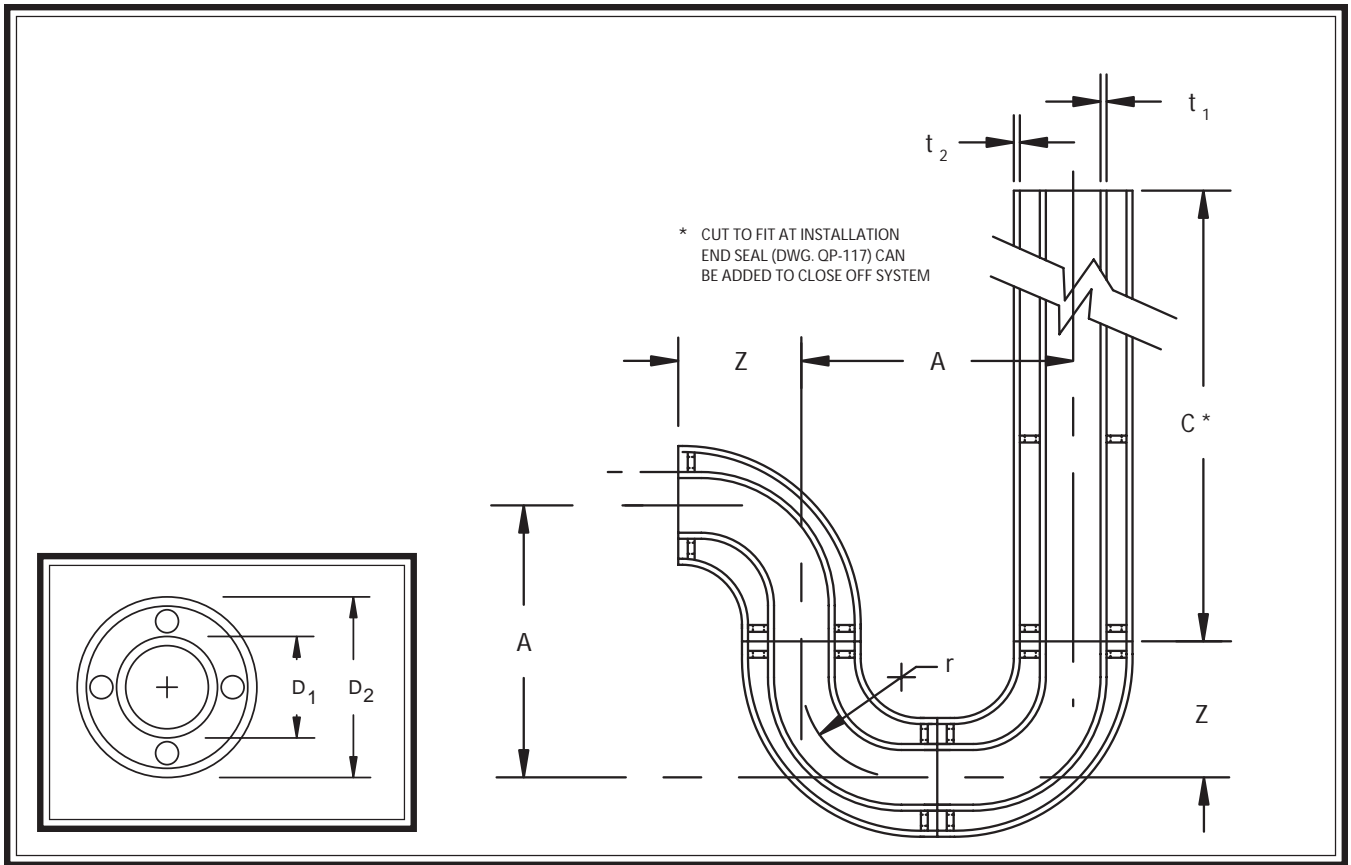
## P-TRAP

Description: P-Trap

Material: Polypropylene

Execution: Molded

Connection: Butt-Fusion



NOMINAL PIPE SIZE		SDR 11		SDR 17.6		SDR 32.5		r	Z	A	C	PART NUMBERS	
		D <sub>1</sub> (IN.)	t <sub>1</sub> (IN.)	D <sub>2</sub> (IN.)	t <sub>2</sub> (IN.)	D <sub>2</sub> (IN.)	t <sub>2</sub> (IN.)					SDR 11 X 17.6	SDR 11 X 32.5
INNER (IN.)	OUTER (IN.)												
1	4	1.26	.12	4.33	.25	4.33	.138	1.89	4.68	9.36	53.0	9901476	9901487
1 1/2	4	1.97	.18	4.33	.25	4.33	.138	2.95	4.68	9.36	53.0	9901477	9901488
2	4	2.48	.23	4.33	.25	4.33	.138	3.74	4.68	9.36	54.0	9901478	9901489
2	6	2.48	.23	6.30	.36	6.30	.197	3.74	6.53	13.06	55.0	9901479	9901490
2 1/2	6	2.95	.27	6.30	.36	6.30	.197	4.45	6.53	13.06	55.0	9901480	9901491
3	6	3.54	.32	6.30	.36	6.30	.197	5.31	6.53	13.06	55.0	9901481	9901492
4	8	4.33	.39	7.87	.45	7.87	.244	6.50	8.11	16.22	57.0	9901482	9901493
6	10	6.30	.57	9.84	.56	9.84	.307	9.45	9.96	19.92	58.0	9901483	9901494
8	12	7.87	.72	12.40	.70	12.40	.386	11.81	10.43	20.86	59.0	9901484	9901495
10	14	9.84	.90	13.98	.79	13.98	.437	14.76	13.39	26.78	60.0	9901485	9901496
12	16	12.40	1.13	15.75	.89	15.75	.488	18.62	13.78	27.56	60.0	9901486	9901497

# DoubleQuik - Dimensional Data

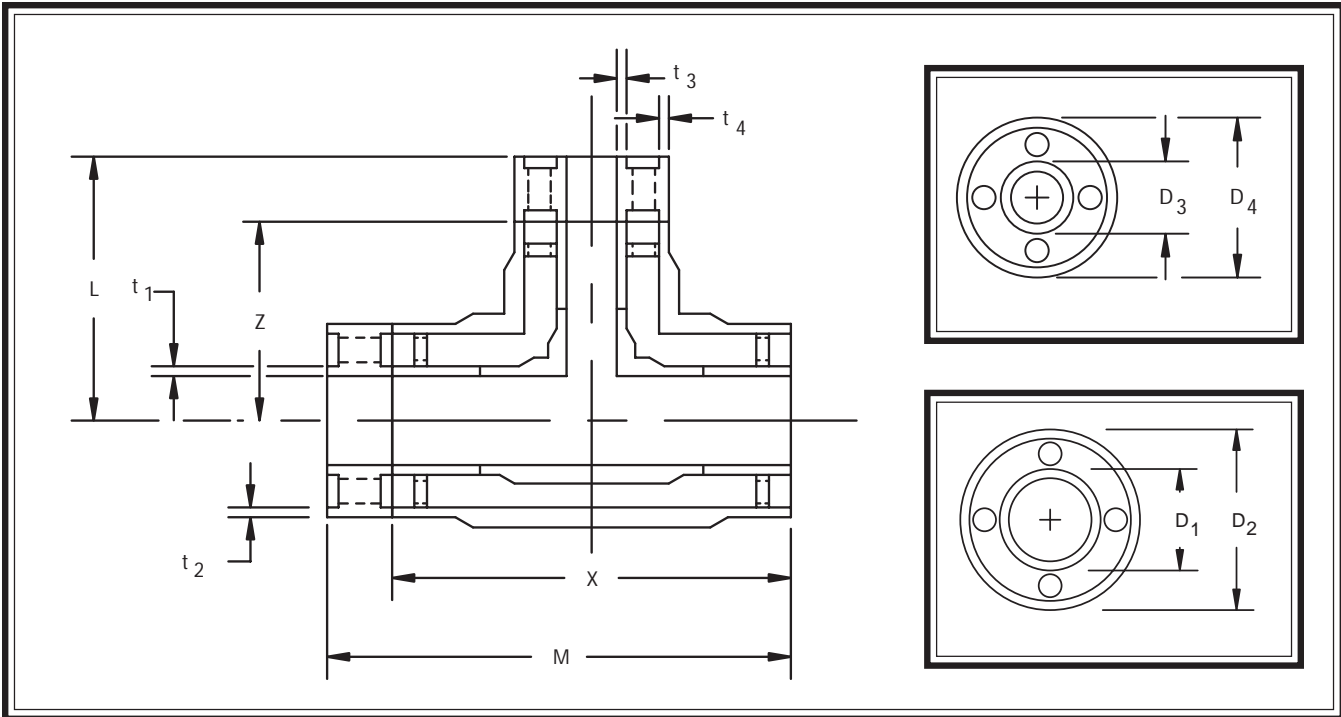
## ANCHORED REDUCING TEE

Description: Anchored Reducing Tee

Material: Polypropylene

Execution: Molded

Connection: Butt-Fusion



NOMINAL PIPE SIZE				SDR 11		SDR 17.6		SDR 17.6		SDR 11		SDR 17.6		SDR 17.6		Z	L	X	M	PART NUMBERS	
MAIN RUN		BRANCH OFF		D <sub>1</sub>	t <sub>1</sub>	D <sub>1</sub>	t <sub>1</sub>	D <sub>2</sub>	t <sub>2</sub>	D <sub>3</sub>	t <sub>3</sub>	D <sub>3</sub>	t <sub>3</sub>	D <sub>4</sub>	t <sub>4</sub>					(IN.)	(IN.)
INNER (IN.)	OUTER (IN.)	INNER (IN.)	OUTER (IN.)	(IN.)	(IN.)	(IN.)	(IN.)	(IN.)	(IN.)	(IN.)	(IN.)	(IN.)	(IN.)	(IN.)	(IN.)	(IN.)	(IN.)	(IN.)	(IN.)	(IN.)	(IN.)
2	4	1 1/2	4	2.48	.23	2.48	.14	4.33	.25	1.97	.18	1.97	.11	4.33	.25	4.72	6.72	9.45	11.20	9901520	9901544
2	6	1 1/2	4	2.48	.23	2.48	.14	6.30	.57	1.97	.18	1.97	.11	4.33	.25	5.71	7.71	12.99	15.12	9901521	9901546
2 1/2	6	1 1/2	4	2.95	.27	2.95	.17	6.30	.57	1.97	.18	1.97	.11	4.33	.25	5.71	7.71	12.99	15.12	9901522	9901546
2 1/2	6	2	4	2.95	.27	2.95	.17	6.30	.36	2.48	.23	2.48	.14	4.33	.25	5.71	7.84	12.99	15.12	9901523	9901547
2 1/2	6	2	6	2.95	.27	2.95	.17	6.30	.57	2.48	.23	2.48	.14	6.30	.36	6.50	8.63	12.99	15.12	9901524	9901548
3	6	1 1/2	4	3.54	.32	3.54	.20	6.30	.57	1.97	.18	1.97	.11	4.33	.25	5.71	7.46	12.99	15.12	9901525	9901549
3	6	2	4	3.54	.32	3.54	.20	6.30	.36	2.48	.23	2.48	.14	4.33	.25	5.71	7.84	12.99	15.12	9901526	9901550
3	6	2	6	3.54	.32	3.54	.20	6.30	.57	2.48	.23	2.48	.14	6.30	.36	6.50	8.63	12.99	15.12	9901527	9901551
3	6	2 1/2	6	3.54	.32	3.54	.20	6.30	.57	2.95	.27	2.95	.17	6.30	.36	6.50	8.63	12.99	15.12	9901528	9901552
4	8	2	4	4.33	.39	4.33	.25	7.87	.45	2.48	.23	2.48	.14	4.33	.25	6.58	8.71	15.75	18.0	9901529	9953553
4	8	2	6	4.33	.39	4.33	.25	7.87	.72	2.48	.23	2.48	.14	6.30	.36	7.24	9.37	15.75	18.0	9901530	9901554
4	8	2 1/2	6	4.33	.39	4.33	.25	7.87	.72	2.95	.27	2.95	.17	6.30	.36	7.24	9.37	15.75	18.0	9901531	9901555
4	8	3	6	4.33	.39	4.33	.25	7.87	.72	3.54	.32	3.54	.20	6.30	.36	7.24	9.37	15.75	18.0	9901532	9901556
6	10	2	4	6.30	.57	6.30	.36	9.84	.56	2.48	.23	2.48	.14	4.33	.25	7.56	9.69	17.72	20.22	9901533	9901557
6	10	2	6	6.30	.57	6.30	.36	9.84	.90	2.48	.23	2.48	.14	6.30	.36	10.79	12.92	17.72	20.22	9901534	9901558
6	10	3	6	6.30	.57	6.30	.36	9.84	.90	3.54	.32	3.54	.20	6.30	.36	10.79	12.92	17.72	20.22	9901535	9901559
6	10	4	8	6.30	.57	6.30	.36	9.84	.90	4.33	.39	4.33	.25	7.87	.45	8.86	11.11	19.69	22.19	9901536	9901560
8	12	2	4	7.87	.72	7.87	.45	12.40	.70	2.48	.23	2.48	.14	4.33	.25	8.27	10.40	15.75	18.50	9901537	9901561
8	12	2	6	7.87	.72	7.87	.45	12.40	1.13	2.48	.23	2.48	.14	6.30	.36	10.24	12.37	18.11	20.86	9901538	9901562
8	12	3	6	7.87	.72	7.87	.45	12.40	1.13	3.54	.32	3.54	.20	6.30	.36	10.24	12.37	18.11	20.86	9901539	9901563
8	12	4	8	7.87	.72	7.87	.45	12.40	1.13	4.33	.39	4.33	.25	7.87	.45	10.24	12.49	19.69	22.44	9901540	9901564
8	12	6	10	7.87	.72	7.87	.45	12.40	1.13	6.30	.57	6.30	.36	9.84	.56	10.24	12.74	21.65	24.40	9901541	9901565
10	14	4	8	9.48	.90	9.48	.56	13.98	.79	4.33	.39	4.33	.25	7.87	.45	11.02	13.27	19.69	22.69	9901542	9901566
10	14	6	10	12.40	1.13	12.40	.70	13.98	.79	6.30	.57	6.30	.36	9.84	.56	11.02	13.52	21.65	24.65	9901543	9901567

# DoubleQuik - Dimensional Data

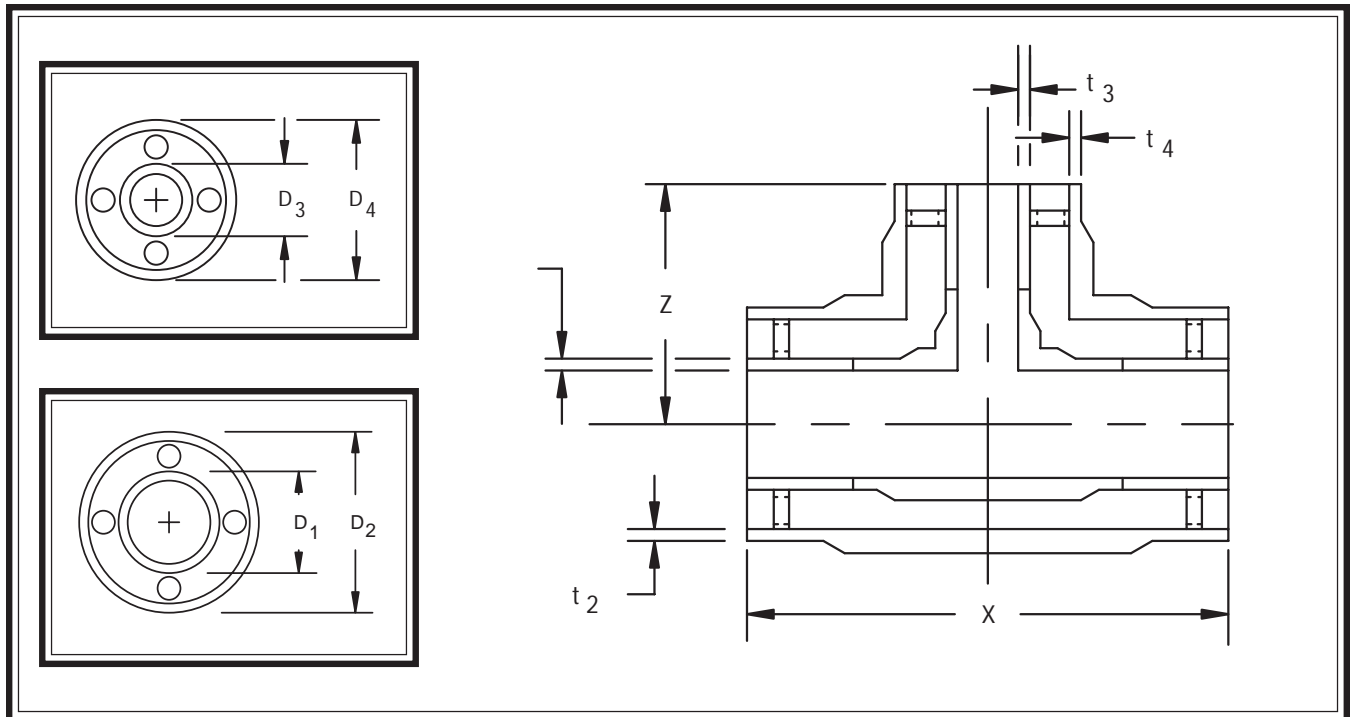
## REDUCING TEE

Description: Reducioq Tee

Material: Polypropylene

Execution: Molded

Connection: Butt-Fusion

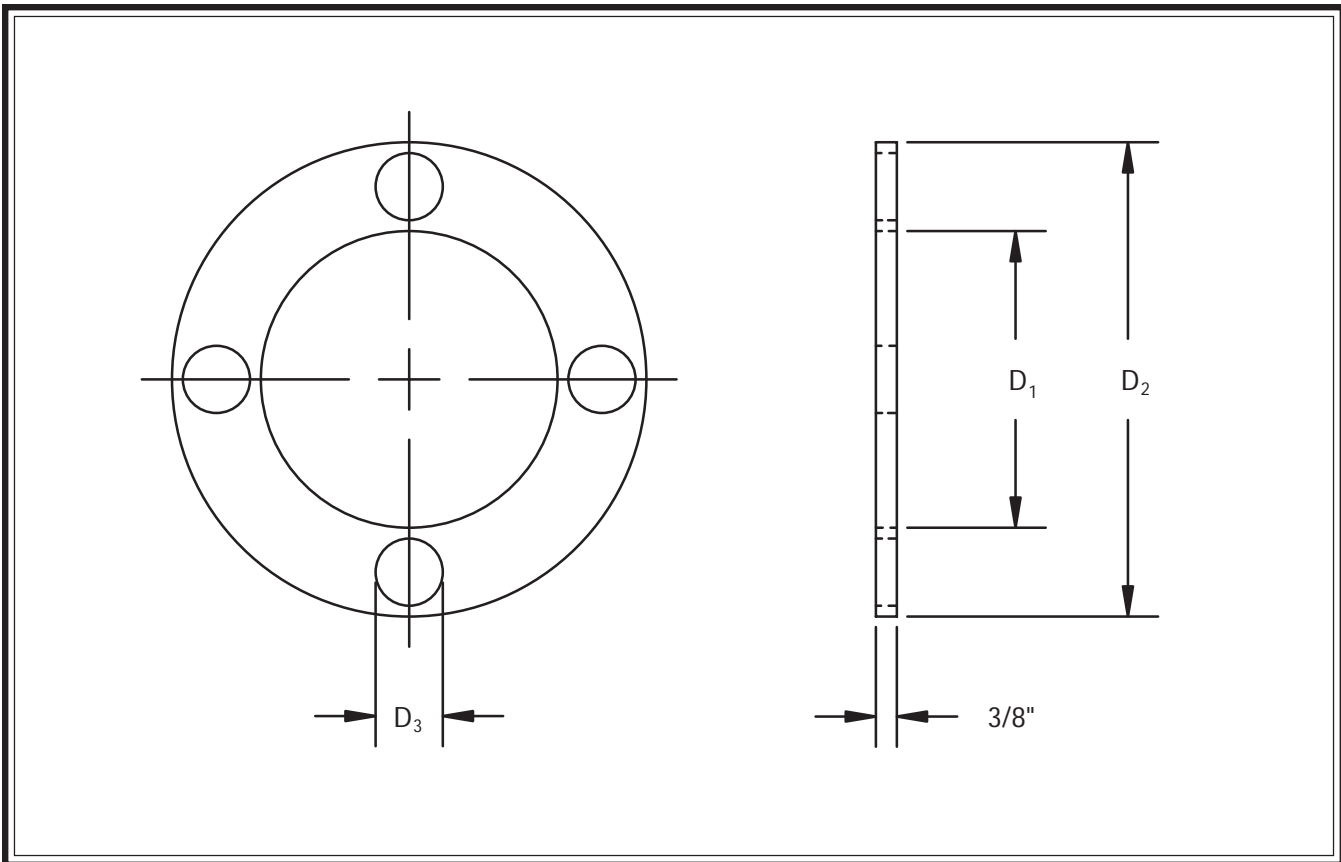


NOMINAL PIPE SIZE				SDR 11		SDR 17.6		SDR 17.6		SDR 11		SDR 17.6		SDR 17.6		PART NUMBERS			
MAIN RUN		BRANCH OFF		D <sub>1</sub>	t <sub>1</sub>	D <sub>1</sub>	t <sub>1</sub>	D <sub>2</sub>	t <sub>2</sub>	D <sub>3</sub>	t <sub>3</sub>	D <sub>3</sub>	t <sub>3</sub>	D <sub>4</sub>	t <sub>4</sub>	Z	X	SDR 11 X 17.6	SDR 17.6 X SDR 17.6
INNER (IN.)	OUTER (IN.)	INNER (IN.)	OUTER (IN.)	(IN.)	(IN.)	(IN.)	(IN.)	(IN.)	(IN.)	(IN.)	(IN.)	(IN.)	(IN.)	(IN.)	(IN.)	(IN.)	(IN.)		
2	4	1 1/2	4	2.48	.23	2.48	.14	4.33	.25	1.97	.18	1.97	.11	4.33	.25	4.72	9.45	9901568	9901592
2	6	1 1/2	4	2.48	.23	2.48	.14	6.30	.57	1.97	.18	1.97	.11	4.33	.25	5.71	12.99	9901569	9901593
2 1/2	6	1 1/2	4	2.95	.27	2.95	.17	6.30	.57	1.97	.18	1.97	.11	4.33	.25	5.71	12.99	9901570	9901594
2 1/2	6	2	4	2.95	.27	2.95	.17	6.30	.36	2.48	.23	2.48	.14	4.33	.25	5.71	12.99	9901571	9901595
2 1/2	6	2	6	2.95	.27	2.95	.17	6.30	.57	2.48	.23	2.48	.14	6.30	.36	6.50	12.99	9901572	9901596
3	6	1 1/2	4	3.54	.32	3.54	.20	6.30	.57	1.97	.18	1.97	.11	4.33	.25	5.71	12.99	9901573	9901597
3	6	2	4	3.54	.32	3.54	.20	6.30	.36	2.48	.23	2.48	.14	4.33	.25	5.71	12.99	9901574	9901598
3	6	2	6	3.54	.32	3.54	.20	6.30	.57	2.48	.23	2.48	.14	6.30	.36	6.50	12.99	9901575	9901599
3	6	2 1/2	6	3.54	.32	3.54	.20	6.30	.57	2.95	.27	2.95	.17	6.30	.36	6.50	12.99	9901576	9901600
4	8	2	4	4.33	.39	4.33	.25	7.87	.45	2.48	.23	2.48	.14	4.33	.25	6.58	15.75	9901577	9901601
4	8	2	6	4.33	.39	4.33	.25	7.87	.72	2.48	.23	2.48	.14	6.30	.36	7.24	15.75	9901578	9901602
4	8	2 1/2	6	4.33	.39	4.33	.25	7.87	.72	2.95	.27	2.95	.17	6.30	.36	7.24	15.75	9901579	9901603
4	8	3	6	4.33	.39	4.33	.25	7.87	.72	3.54	.32	3.54	.20	6.30	.36	7.24	15.75	9901580	9901604
6	10	2	4	6.30	.57	6.30	.36	9.84	.56	2.48	.23	2.48	.14	4.33	.25	7.56	17.72	9901581	9901605
6	10	2	6	6.30	.57	6.30	.36	9.84	.90	2.48	.23	2.48	.14	6.30	.36	10.79	17.72	9901582	9901606
6	10	3	6	6.30	.57	6.30	.36	9.84	.90	3.54	.32	3.54	.20	6.30	.36	10.79	17.72	9901583	9901607
6	10	4	8	6.30	.57	6.30	.36	9.84	.90	4.33	.39	4.33	.25	7.87	.45	8.86	19.69	9901584	9901608
8	12	2	4	7.87	.72	7.87	.45	12.40	.70	2.48	.23	2.48	.14	4.33	.25	8.27	15.75	9901585	9901609
8	12	2	6	7.87	.72	7.87	.45	12.40	1.13	2.48	.23	2.48	.14	6.30	.36	10.24	18.11	9901586	9901610
8	12	3	6	7.87	.72	7.87	.45	12.40	1.13	3.54	.32	3.54	.20	6.30	.36	10.24	18.11	9901587	9901611
8	12	4	8	7.87	.72	7.87	.45	12.40	1.13	4.33	.39	4.33	.25	7.87	.45	10.24	19.69	9901588	9901612
8	12	6	10	7.87	.72	7.87	.45	12.40	1.13	6.30	.57	6.30	.36	9.84	.56	10.24	21.65	9901589	9901613
10	14	4	8	9.48	.90	9.48	.56	13.98	.79	4.33	.39	4.33	.25	7.87	.45	11.02	19.69	9901590	9901614
10	14	6	10	12.40	1.13	12.40	.70	13.98	.79	6.30	.57	6.30	.36	9.84	.56	11.02	21.65	9901591	9901615

# DoubleQuik - Dimensional Data

## SUPPORT

Description: Support  
 Material: Polypropylene  
 Execution: Molded  
 Connection: Butt-Fusion



NOMINAL PIPE SIZE		SDR 11 OR SDR 17.6		SDR 17.6			SDR 32.5		PART NUMBERS	
		D <sub>1</sub> (IN.)	D <sub>2</sub> (IN.)	D <sub>3</sub> (IN.)	D <sub>2</sub> (IN.)	D <sub>3</sub> (IN.)	SDR 11 OR SDR 17.6 X 17.6	SDR 11 OR SDR 17.6 X 32.5		
INNER (IN.)	OUTER (IN.)									
1	4	1.29	3.74	.875	3.96	1.00	9901616	9901627		
1 1/2	4	2.0	3.74	.625	3.96	.625	9901617	9901628		
2	4	2.51	3.74	.375	3.96	.500	9901618	9901629		
2	6	2.51	5.49	1.00	5.82	1.25	9901619	9901630		
2 1/2	6	2.99	5.49	.875	5.82	1.00	9901620	9901631		
3	6	3.59	5.49	.625	5.82	.70	9901621	9901632		
4	8	4.38	6.89	.875	7.29	1.00	9901622	9901633		
6	10	6.41	8.56	.750	9.06	1.00	9901623	9901634		
8	12	7.97	10.81	1.00	11.45	1.25	9901624	9901635		
10	14	9.95	12.21	.875	12.92	1.00	9901625	9901636		
12	16	12.51	13.77	.375	14.59	.75	9901626	9901637		

# DoubleQuik - Dimensional Data

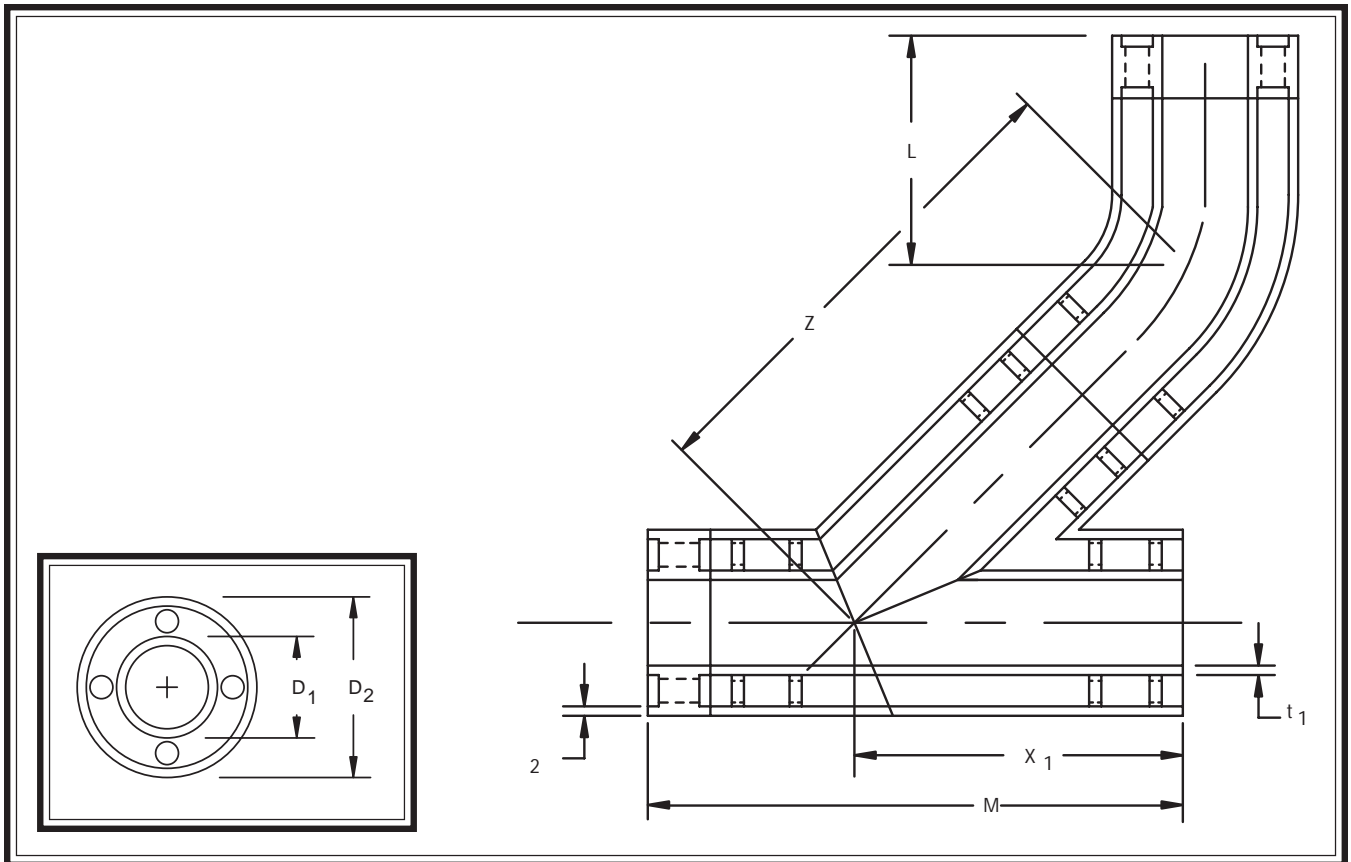
## ANCHORED LATERAL WITH 1/8 BEND

Description: Anchored Lateral with 1/8 Bend

Material: Polypropylene

Execution: Molded

Connection: Butt-Fusion

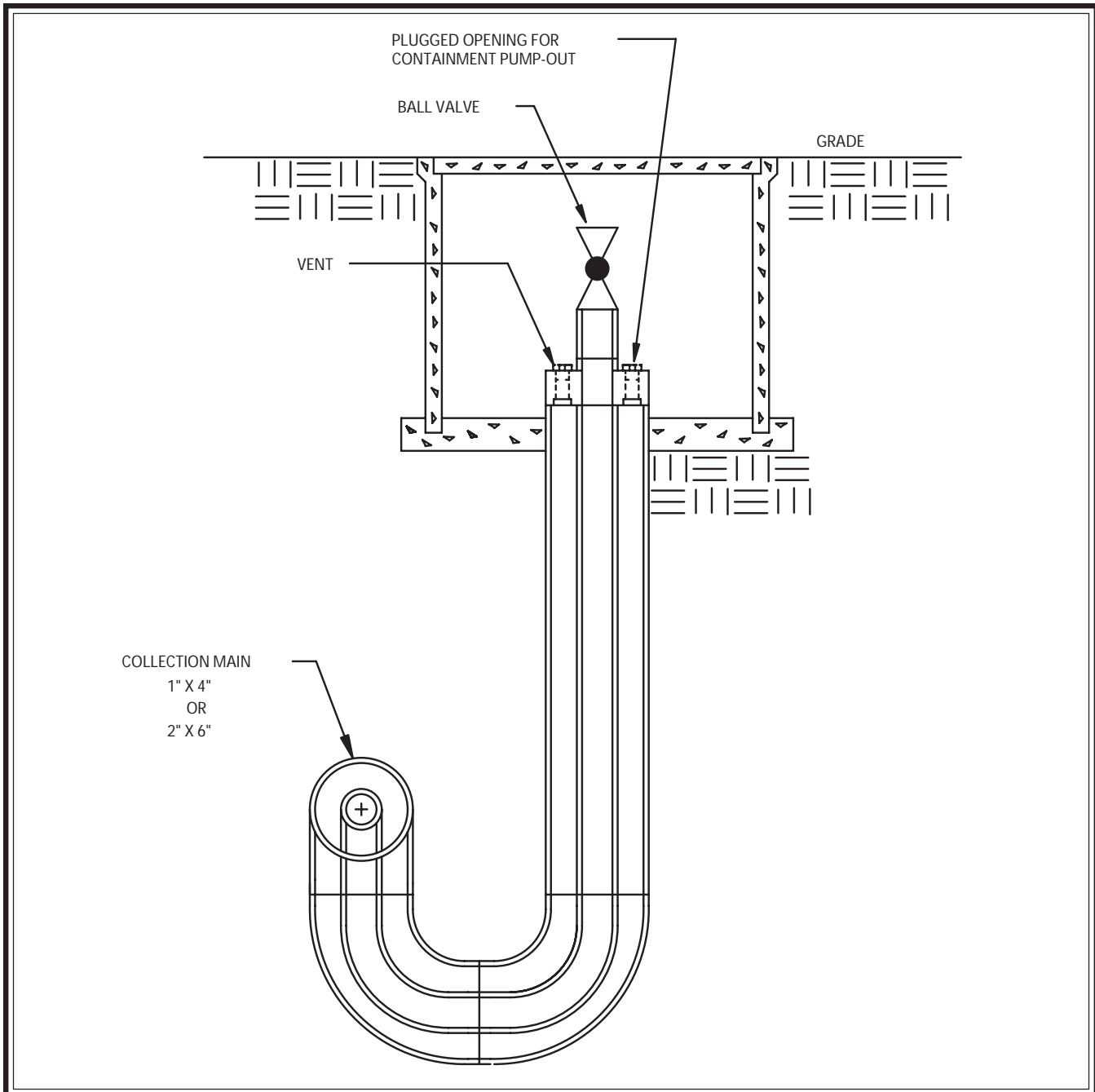


NOMINAL PIPE SIZE		SDR 11		SDR 32.5		X <sub>1</sub> (IN.)	M (IN.)	Z (IN.)	L (IN.)
		D <sub>1</sub> (IN.)	t <sub>1</sub> (IN.)	D <sub>2</sub> (IN.)	t <sub>2</sub> (IN.)				
1	4	1.26	.12	4.33	.138	16.0	25.75	24.58	10.33
1 1/2	4	1.97	.18	4.33	.138	16.0	26.00	24.58	10.58
2	4	2.48	.23	4.33	.138	16.0	26.00	24.58	10.71
2	6	2.48	.23	6.30	.197	20.0	30.13	29.80	11.92
2 1/2	6	2.95	.27	6.30	.197	20.0	30.13	29.80	11.92
3	6	3.54	.32	6.30	.197	20.0	30.13	29.80	11.92
4	8	4.33	.39	7.87	.244	22.0	34.25	32.79	13.04
6	10	6.30	.57	9.84	.307	26.0	38.50	47.14	23.64
8	12	7.87	.72	12.40	.386	28.0	42.75	50.68	25.43
10	14	9.84	.90	13.98	.437	30.0	45.00	53.94	26.94
12	16	12.40	1.13	15.75	.488	32.0	49.25	57.43	28.68

# DoubleQuik - Dimensional Data

## PUMP-OUT

Description: Pump-Out  
Material: Polypropylene  
Execution: Molded  
Connection: Butt-Fusion



# Notes:

# Notes:

# Notes:

# **DoubleQuik - Dimensional Data**

## ***Simtech Industrial Products, Inc.***

47-A Runway Road, Levittown, PA 19057  
Phone (215) 547-0444 Fax 215-547-9129  
E-mail: [info@simtechUSA.com](mailto:info@simtechUSA.com)  
Web site: [www.simtechUSA.com](http://www.simtechUSA.com)

### **WARRANTY**

Simtech Industrial Products, Inc. products are warranted to be free from defects in materials and workmanship for one (1) year from date of shipment. No claim shall be permitted under this warranty unless Buyer gives Simtech Industrial Products, Inc. written notice of all respects in which Buyer claims the product to be defective. Notice must be received within ten (10) days from the date which the Buyer discovers, or should have discovered the defect. Buyer shall give Simtech Industrial Products, Inc. a reasonable opportunity to inspect the product after notice has been given. This warranty shall not apply to any products or components, which have been subjected to abnormal use, negligence or accident.

Seller's sole obligation under this warranty shall be limited solely on the repair or replacement, as elected by Simtech Industrial Products, Inc., of defective or non-conforming material. To the maximum extent permitted by law, Buyer irrevocably waives all claims for money damages relating to the condition, use and performance of the goods purchased. In no event shall Simtech Industrial Products, Inc. liability exceed the purchase price of the product sold by Simtech Industrial Products, Inc.

In no event, whether because of a breach of warranty or representation or any other cause, whether based upon contract, tort, warranty or otherwise, arising out of the performance or nonperformance by seller of its obligations under this agreement or with respect to the products sold pursuant here to; shall seller be liable for lost earnings, income or profits or indirect, incidental, liquidated or consequential damages.

The implied warranties of merchantability and fitness for a particular purpose except as set forth in this warranty, express or implied, are hereby disclaimed and excluded. Nothing shall be construed as an additional warranty unless specifically designated as such in writing and signed by Simtech Industrial Products, Inc.

Simtech Industrial Products, Inc. reserves the right, in its discretion, at any time and from time to time, to make changes to any specification, data or information contained herein.