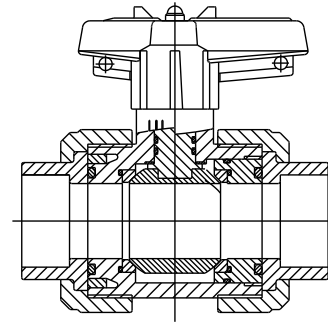


VBL Series

True Union Blocking Ball Valve with Locking Handle

Material: PVC, PP, PVDF
Size: 1/2" - 4"
Pressure Rating: 230 psi 1/2" - 2"; 150 psi 2 1/2" - 4"
Seats: PTFE
Seals: EPDM or Viton
Connections: IPS Socket
 Metric Socket
 NPT Threaded
 ANSI 150 Flanged
 Metric Butt Fusion



ISO 9002 CERTIFIED

Engineering Guide Specification

Materials of Construction:

PVC: Class 12454B per ASTM D1784
PP: Class PP 110B76383 per ASTM D4101
PVDF: Type 1 per ASTM D3222
Seats: EPDM or Viton
Seals: PTFE

Guide Specification: All ball valves constructed of the materials indicated. Valves shall be manufactured with an adjustable carrier, threaded into the body to ensure the valve is blocking in both directions. Valve stem shall be a safety shear stem with double O-ring seals. Body shall have unions on both ends and handle shall incorporate a spanner for adjusting and removing the carrier, teflon seat shall be energized by O-ring, ball shall be machined and tumbled to ensure roundness. Handle is of a safety design, with lockout/tagout as a standard, as manufactured by SIMTECH.

Special Features

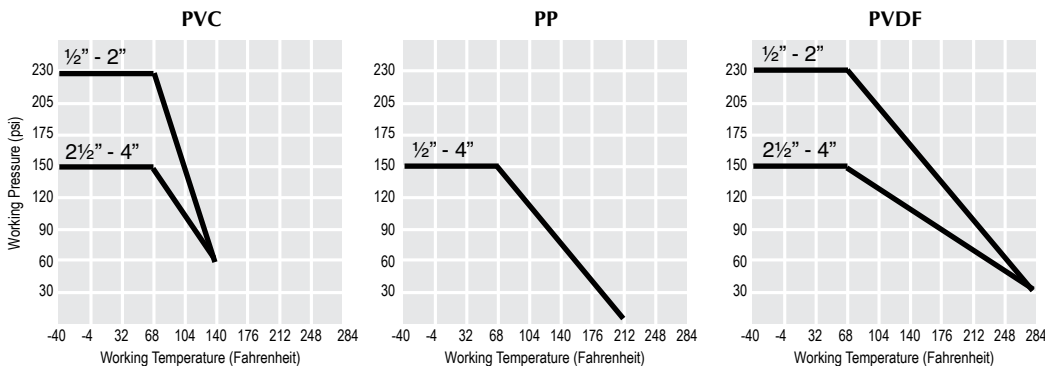
- Full port
- Bidirectional flow
- Low maintenance and extended operational life
- Handle equipped as a spanner device to adjust carrier
- Energized Teflon Seats
- Safety handle equipped with lockout/tagout standard
- Electric and Pneumatic Actuation Available
- Double O-Ring Seal on Stem

Flow Rate in Gallons Per Minute

ND	1/2	3/4	1	1 1/4	1 1/2	2	2 1/2	3	4
C _v	19.26	35.36	58.12	88.24	128	238	371	518	768

C_v is the number of gallons per minute of water at a temperature of 68°F that will flow through a valve with a 1 psi pressure differential at a specified travel.

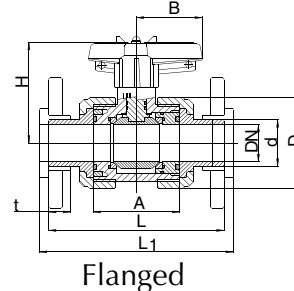
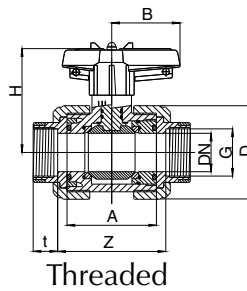
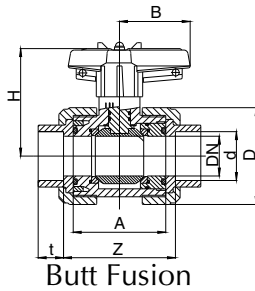
Pressure/Temperature Graph: Working PSI/Fahrenheit



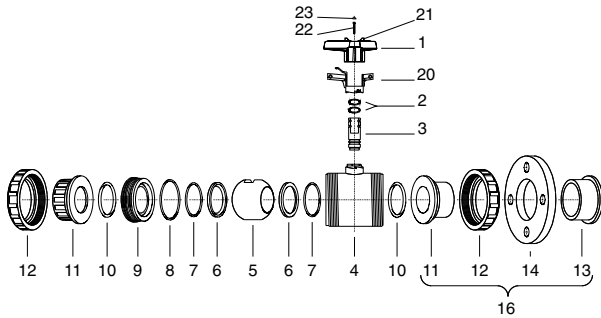
VBL Series

Dimensional Data

d Inches	L	L1	A	Z	T	D	H	B	PN
1/2"	4.88	5.12	2.44	2.66	0.65	2.09	2.83	1.57	0.63
3/4"	5.67	5.91	2.76	2.99	0.77	2.48	3.09	2.03	0.63
1"	6.06	6.30	2.91	3.19	0.89	2.76	3.21	2.03	0.63
1 1/4"	6.85	7.09	3.31	3.54	1.04	3.35	3.94	2.25	0.63
1 1/2"	7.64	7.87	3.74	4.09	1.24	3.98	4.21	2.87	0.63
2"	8.82	9.06	4.29	4.76	1.52	4.78	4.59	3.35	0.63
2 1/2"	11.18	11.42	5.39	5.83	1.77	6.10	5.67	4.33	0.63
3"	11.81	12.20	6.42	7.20	2.19	7.40	6.42	5.20	0.39
4"	13.39	13.78	6.42	6.93	2.52	4.65	6.42	5.20	0.24



Parts Listing



- | | |
|-----------------------|----------------------------------|
| 1. Handle | 11. Connections |
| 2. O-Ring | 12. Union nut |
| 3. Shaft | 13. Flange adapter |
| 4. Body | 14. Flange |
| 5. Ball | 16. Connection set |
| 6. Ball seating joint | 20. Spring loaded locking sleeve |
| 7. O-Ring | 21. Spigot |
| 8. O-Ring | 22. Screw |
| 9. Thrust collar | 23. Cover for screw |
| 10. O-Ring | |

Pressure Loss—Flow Diagram

