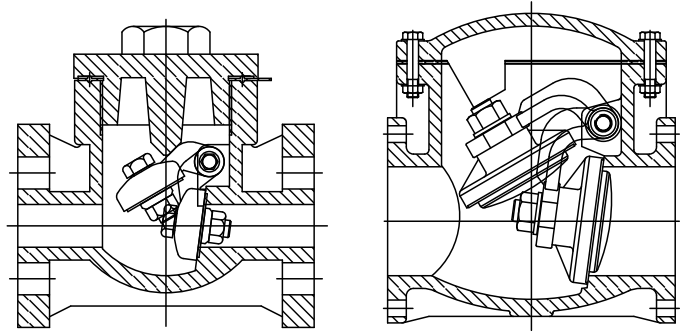


VS Series

Flange End Swing Check Valve

Material: PVC, CPVC (Corzan™) PP, PVDF
Size: 3/4" - 8"
Pressure Rating: 150 PSI
Seals: EPDM or Viton
Connections: ANSI 150 lb. Flanged



ISO 9002 CERTIFIED

Engineering Guide Specification

Materials of Construction:

PVC: Class 12454B per ASTM D-1784
CPVC: Class 23447B per ASTM D1784
PP: Class PP110B76383 per ASTM D-4101
PVDF: Type 1 per ASTM D-3222
Seals: EPDM or Viton

Guide Specification: Swing Check valves shall have flanged body, bonnet, swing arm, and flapper constructed of the material as selected above. Bonnet shall include a swing arm stop to prevent the valve from opening too far. Nuts and bolts shall be 304 SS and seat seal shall be EPDM or Viton, as manufactured by SIMTECH.

Special Features

- Suitable for wastewater treatment, chemical plant applications, agricultural irrigation
- Excellent flow characteristics providing minimal pressure drop
- Ideal for horizontal as well as vertical installation
- Top entry for easy in-line maintenance
- Fast closing to minimize water hammer
- All sizes vacuum rated
- Weighted Disc/Shutter available upon request
- PTFE Seals available upon request

Flow Rate in Gallons Per Minute

ND	3/4	1	1½	2	2½	3	4	6	8
C _v	14	24	81	130	230	300	480	1100	1900

C_v is the number of gallons per minute of water at a temperature of 68°F that will flow through a valve with a 1 psi pressure differential at a specified travel.

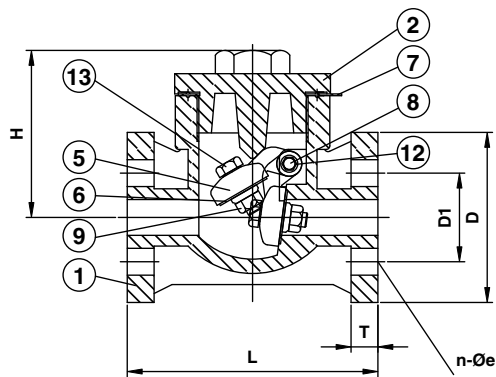
Pressure/Temperature Graph: Working PSI/Fahrenheit

	Seal	Temp.	3/4"	1"	1 1/2"	2"	2 1/2"	3"	4"	6"	8"	
PVC	EPDM or FPM	30 F - 70 F	150	150	150	150	150	150	150	100	70	
		105 F	150	100	100	100	100	100	100	67	47	
		120 F	100	100	100	100	100	100	100	100	60	40
PP	EPDM or FPM	-5 F - 105 F	150	150	150	150	150	150	150	100	70	
		140 F	125	125	125	125	125	125	125	125	83	58
		175 F	103	103	103	103	103	103	103	103	69	48
PVDF	EPDM or FPM	-5 F - 105 F	150	150	150	150	150	150	150	100	70	
		175 F	120	100	100	100	100	100	100	100	70	50
		210 F	65	55	55	55	45	45	45	45	30	30

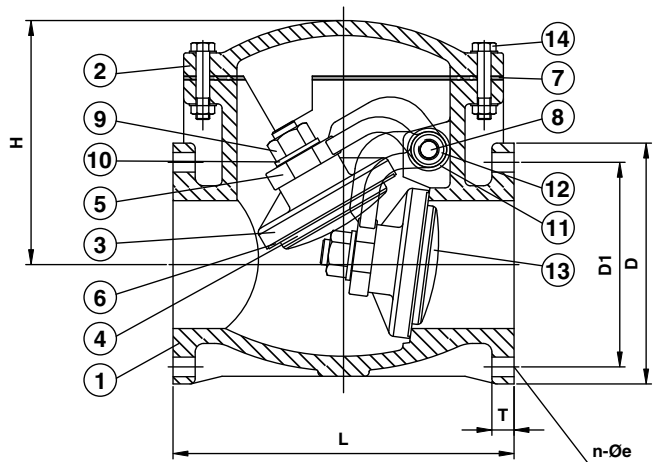
VS Series

Dimensional Data

d Inches	L	D	D1	T	H	n-e
3/4	5.51	3.94	2.76	0.59	3.66	4 - .75
1	6.30	4.25	3.35	0.67	4.62	4 - .75
1 1/2	7.07	5.00	3.86	0.75	5.35	4 - .75
2	7.87	5.98	4.72	0.79	6.54	4 - .75
2 1/2	9.45	7.01	5.51	0.87	6.71	4 - .75
3	10.24	7.52	6.00	0.87	6.69	4 - .75
4	11.81	9.02	7.50	0.94	8.50	8 - .75
6	15.75	11.22	9.49	1.02	11.26	8 - .91
8	19.69	13.50	11.75	1.18	13.35	9 - .91



1/2" & 3/4"



1" to 8"

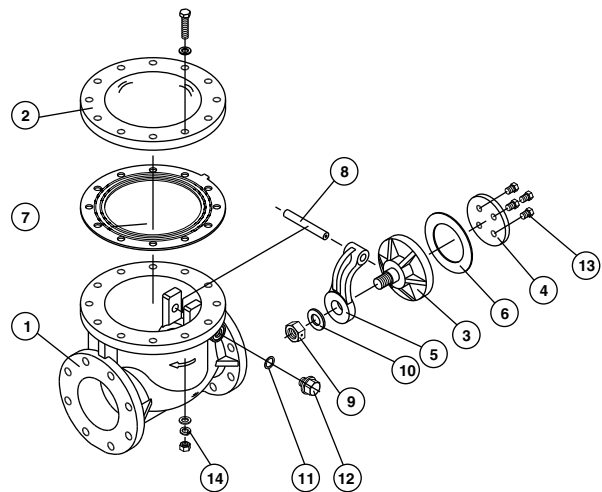
Back Pressure—psi

Back Pressure in PSI Required to Fully Seat and Seal Valve

ND	3/4	1	1 1/2	2	2 1/2	3	4	6	8
PSI	2.8	5	5	5	5	5	4	6	6

Parts Listing

NO.	PART	MATERIAL	Q'TY
1	BODY	UPVC, CPVC, PP, PVDF	1
2	BONNET	UPVC, CPVC, PP, PVDF	1
3	DISC	UPVC, CPVC, PP, PVDF	1
4	DISC HOLDER	UPVC, CPVC, PP, PVDF	1
5	SWAY ARM	UPVC, CPVC, PP, PVDF	1
6	DISK GASKET	EPDM, FPM, NBR, PTFE	1
7	GASKET	EPDM, FPM, NBR, PTFE	1
8	SHAFT	UPVC, CPVC, PP, PVDF	1
9	DISK NUT	UPVC, CPVC, PP, PVDF	1
10	DISC WASHER	UPVC, CPVC, PP, PVDF	1
11	SHEET GASKET	EPDM, FPM, NBR, PTFE	1
12	SHEET BOLT	UPVC, CPVC, PP, PVDF	1
13	DISC BOLT	UPVC, CPVC, PP, PVDF	4-8
14	BOLT SETS	STEEL, SUS 304	8-16



SIMTECH

Phone: 877-777-2467 • Fax: 215-547-9129

www.SimtechUSA.com