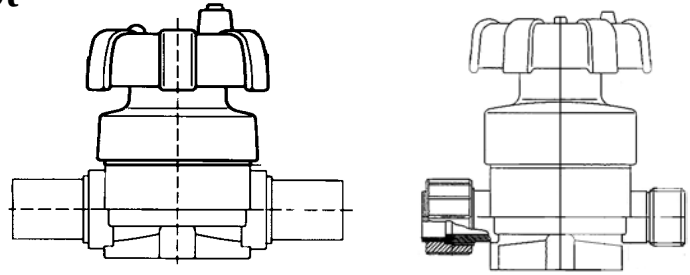


VV Series

True Union, Socket, Non-Union Spigot Diaphragm Valves

Material: PP or PVDF
Size: 20mm to 63mm
Seal/Diaphragm: EPDM, Viton or PTFE
Connections: Metric Socket (ISO/DIN)
 Metric Spigot (ISO/DIN)



ISO 9002 CERTIFIED

Engineering Guide Specification

Materials - Body:

PP: Class PP 110B76383 per ASTM D4101
PVDF: Type 1 per ASTM D3222
Diaphragms: EPDM, FPM or PTFE
Union Seals: EPDM or Viton

Guide Specification: Diaphragm valves shall be weir pattern body molded from the material indicated. Diaphragms shall be as indicated. (PTFE diaphragm shall be two piece assembly consisting of solid PTFE diaphragm with a reinforced EPDM backing cushion.) All hardware shall be protected from atmosphere. Visual indicator and locking handle is standard, as manufactured by SIMTECH.

Special Features

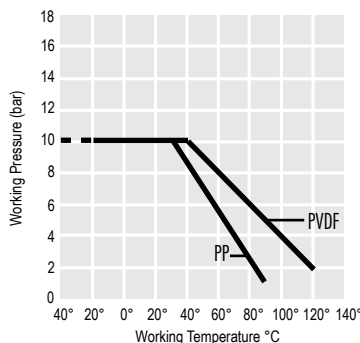
- Position indicator standard
- Glass Filled PP bonnet on all models
- Stainless steel assembly bolts
- Bottom Fasteners for Anchoring / Panel Mount
- Bonnet Bolts are Protected from Atmosphere

Flow Rate in Gallons Per Minute

ND	1/2	3/4	1	1 1/2	2	2 1/2	3	4
C_v	4.4	7.2	10.1	31.0	48.5	90	117	187

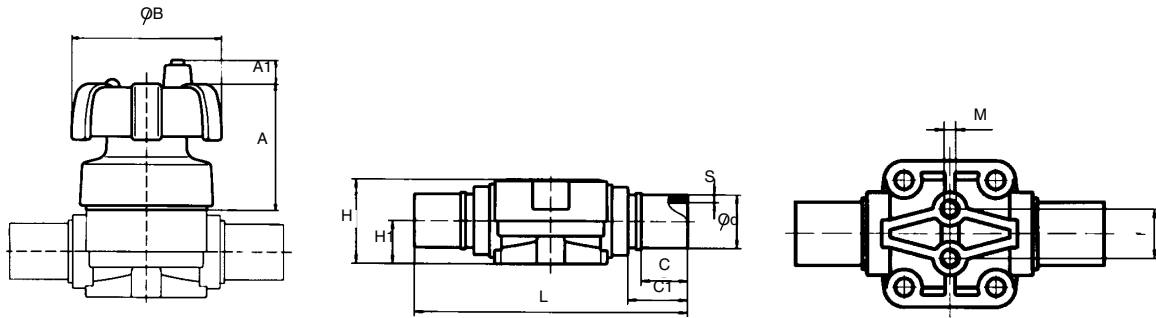
C_v is the number of gallons per minute of water at a temperature of 68°F that will flow through a valve with a 1 psi pressure differential at a specified travel.

Pressure/Temperature Graph:

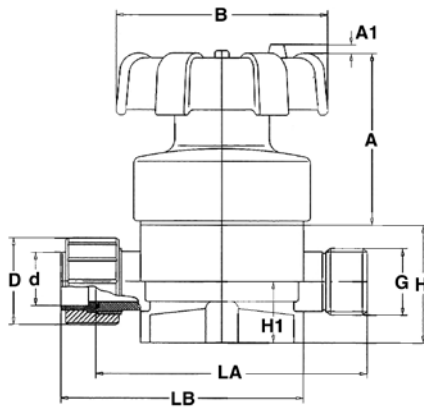


VV Series

Dimensional Data



	d	DN	A	A1	B	L	C	H	H1	M	F
20	0.787	0.591	2.874	0.551	3.543	4.882	0.630	1.969	1.024	0.236	0.984
25	0.984	0.787	2.874	0.551	3.543	5.669	0.748	1.969	1.024	0.236	0.984
32	1.260	0.984	2.874	0.551	3.543	6.142	0.866	1.969	1.024	0.236	0.984
40	1.575	1.260	3.543	0.551	4.488	6.890	0.945	2.913	1.575	0.315	1.752
50	1.969	1.575	3.543	0.551	4.488	7.638	1.063	2.913	1.575	0.315	1.752
63	2.480	1.969	4.370	0.315	5.512	8.819	1.575	3.228	1.575	0.315	1.752



	d	DN	A	A1	B	LA	LB	D	G	H	H1	M	F
20	0.787	0.591	2.874	0.551	3.543	4.252	5.669	1.693	1.000	1.969	1.024	0.236	0.984
25	0.984	0.787	2.874	0.551	3.543	4.252	5.748	2.087	1.250	1.969	1.024	0.236	0.984
32	1.260	0.984	2.874	0.551	3.543	4.567	6.378	2.362	1.500	1.969	1.024	0.236	0.984
40	1.575	1.260	3.543	0.551	4.488	5.276	7.323	2.913	2.000	2.913	1.575	0.315	1.752
50	1.969	1.575	3.543	0.551	4.488	6.063	8.268	3.268	2.250	2.913	1.575	0.315	1.752
63	2.480	1.969	0.433	0.315	5.512	7.165	9.764	4.055	2.750	3.228	1.575	0.315	1.752

SIMTECH

Phone: 877-777-2467 • Fax: 215-547-9129

www.SimtechUSA.com