

Solenoid Valve - Direct Action



ISO 9002 CERTIFIED

Material:	PVC, PP, PTFE
Size:	$\frac{3}{8}$ " - $\frac{3}{4}$ "
Seals:	EPDM, FPM
Diaphragm:	PTFE
Operating Pressure:	0-29psi
Voltage:	230V 50 Hz, 24VDC
Coil Capacity:	8 Watts
Enclosure:	IP65 / NEMA 4x
Operation:	Normally Closed, Normally Open
Electrical Plug:	DIN EN 175301-803
Connections:	Socket Threaded

Materials of Construction:

PVC: Type 1, Class 12454B, ASTM D1784

PP: Class PP 110B76383, ASTM D4101

PTFE: Type 1, D3294

Seals: EPDM, FPM

Valve is available in two positions:

Switching function NC: In the position of rest, the valve is closed by the spring force. When energized (magnetic force) the plunger moves upwards, raising the diaphragm connected to it and allowing the medium to flow.

Switching function NO: In the position of rest, the valve is opened by the spring force. When energized (magnetic force) the plunger moves down, closing the valve.

Flow Rate in Gallons per minute

SIZE	$\frac{3}{8}$ "	$\frac{1}{2}$ "	$\frac{3}{4}$ "
Cv	38.1	52.0	61.3

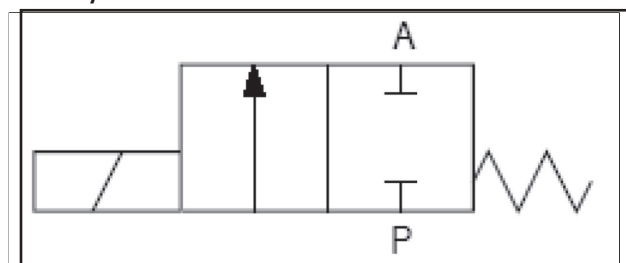
Cv is the number of gallons per minute of water at a temperature of 68°F that will flow through a valve with a 1 psi pressure differential at a specified travel.

Operating Pressure

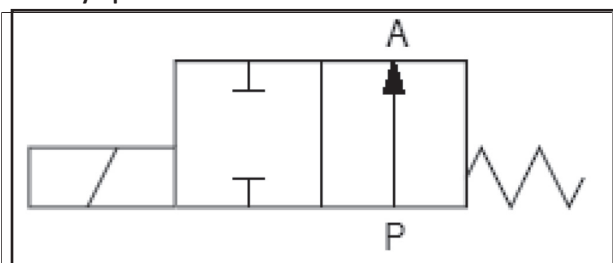
SIZE	$\frac{3}{8}$ "	$\frac{1}{2}$ "	$\frac{3}{4}$ "
psi	29.0	14.5	7.3

Wiring Diagram

Normally Closed

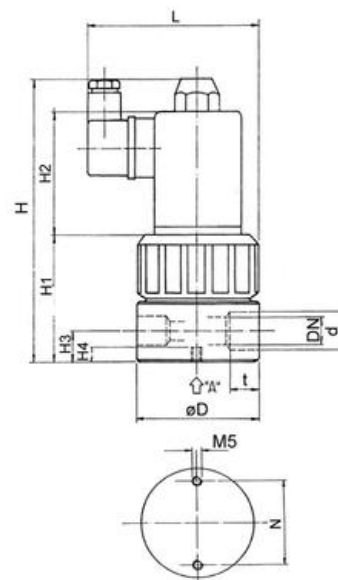


Normally Open

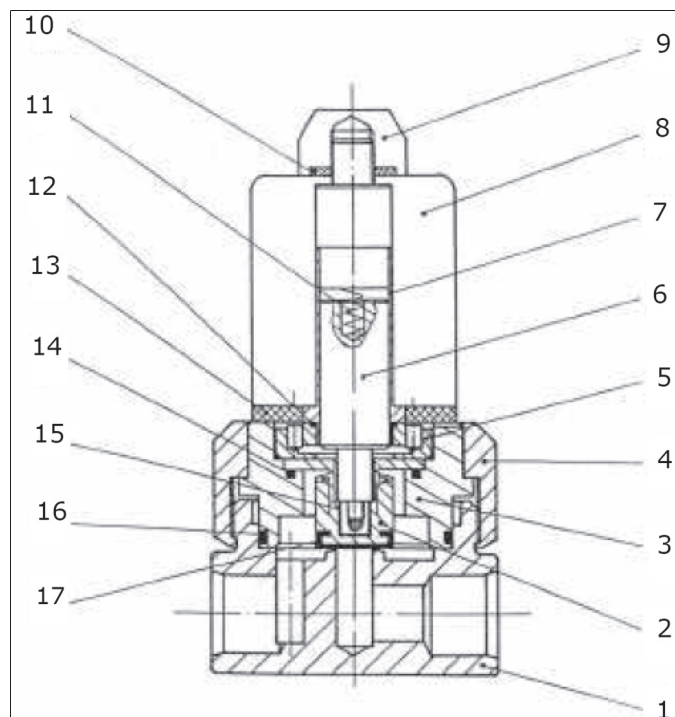


Dimensional Data

Nom. Size	d	D	H	H1	H2	H3	H4	L
⅜"	0.63	2.72	5.45	2.46	2.36	0.28	0.59	3.86
½"	0.79	2.72	5.45	2.46	2.36	0.28	0.59	3.86
¾"	0.98	2.72	5.45	2.46	2.36	0.28	0.59	3.86



Part Listing



Position	Quantity	Description
1	1	valve body
2	1	bellows
3	1	intermediate element
4	1	union nut
5	1	intermediate ring
6	1	plunger
7	1	plunger guide tube
8	1	magnet coil
9	1	cap nut
10	1	flat sealing ring
11	1	pressure spring
12	1	O-ring
13	1	flat sealing ring
14	1	O-ring
15	1	threaded bush
16	1	O-ring
17	1	seal bonnet