

One Piece Flanged Body Design



Material:	PPH, Kynar® PVDF , HDPE
Size:	½" - 6"
Pressure Rating:	232psi (½" - 2" PPH, Kynar® PVDF) (½" - 4" PPG) 150psi (2½" - 4" PPH, Kynar® PVDF) 150psi (½" - 4" HDPE)
Seats:	PTFE
Seals:	EPDM, FEP, FKM
Connections:	ANSI 150 lb Flanged

ISO 9002 CERTIFIED

Materials of Construction:

PP: Class PP 110B76383 per ASTM D4101

Kynar® PVDF: Type 1 per ASTM D3222

HDPE: ASTM F2619 / F2619M

Seals: EPDM, FKM, FEP

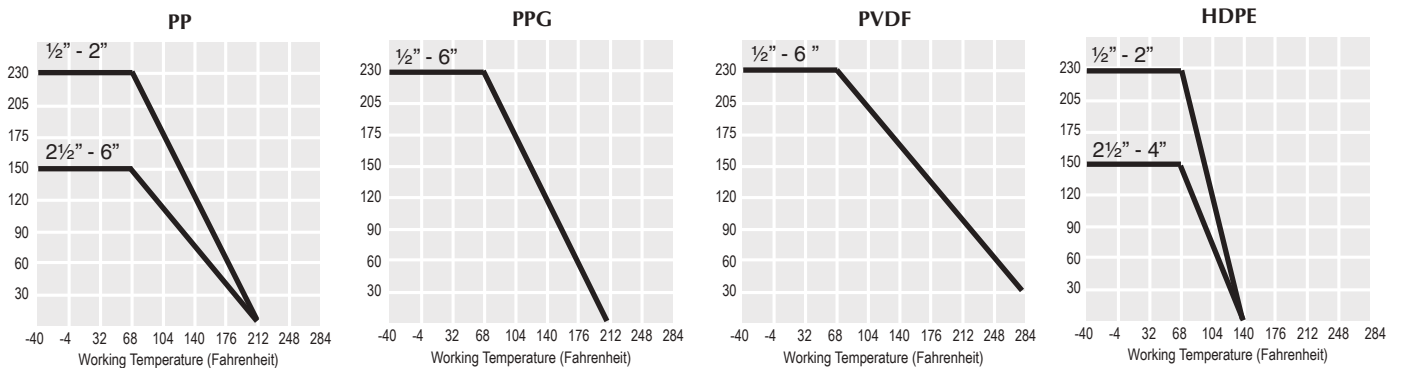
Seats: PTFE

Guide Specification: All ball valves constructed of the materials indicated. Body supplied as one piece, Utilizing no bolts, clips or other metals to hold valve together, to prevent any radial leak paths. Stem seal shall be Chevron Design utilizing PTFE Packing. Manufactured as an ANSI Short Dimension. All valves shall be pressure and vacuum tested in both the open and closed position by the manufacture. Handle is of a safety design, with lockout/tag out option ½" thru 2" and standard (2½" to 6"), as manufactured by SIMTECH.

Features

- Uni-body design eliminates fugitive emissions
- Ideal for highly corrosive fluids
- Light weight design
- PTFE chevron packing
- Full port design
- Available with out internal elastomers
- Low maintenance and extended operational life
- Rugged industrial design
- Cost effective alternative to stainless steel, exotic alloy or PTFE lined valves

Pressure/Temperature Graph: Working PSI/Fahrenheit

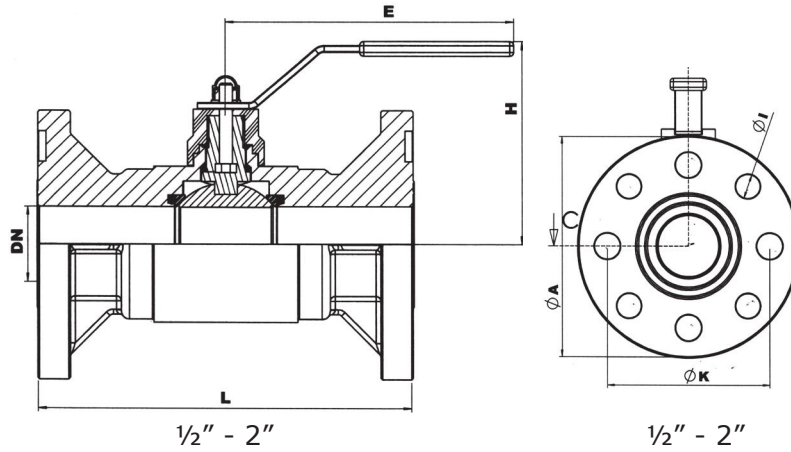


Flow Rate in Gallons Per Minute

Size	1/2"	3/4"	1"	1 1/4"	1 1/2"	2"	2 1/2"	3"	4"	6"
Cv	214	405	809	1156	1850	3584	5781	8094	8094	8094

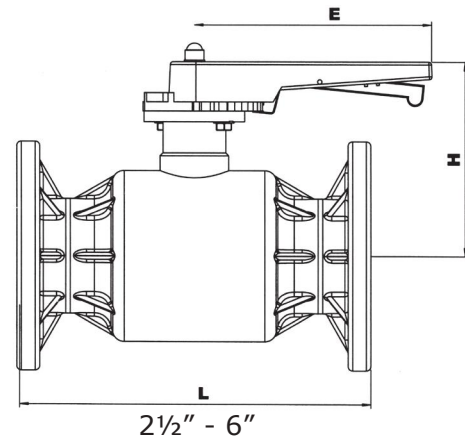
Cv is the number of gallons per minute of water at a temperature of 68°F that will flow through a valve with a 1 psi pressure differential at a specified travel.

Dimensional Data



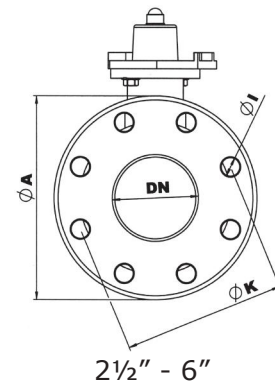
Size	A	E	H	I	K	L	Bolt Holes
1/2"	3.74	2.87	1.99	0.63	2.36	4.25	4
3/4"	4.13	6.06	3.94	0.63	2.76	4.61	4
1"	4.61	6.06	3.94	0.63	3.13	5.00	4
1 1/4"	5.51	7.17	4.84	0.63	3.50	5.50	4
1 1/2"	5.91	7.17	4.84	0.63	3.88	6.50	4
2"	6.50	7.17	5.24	0.75	4.75	7.00	4
2 1/2"	7.28	8.46	7.99	0.75	5.51	7.50	4
3"	7.87	8.46	7.99	0.75	6.00	8.00	4
4"*	8.86	8.46	7.99	0.75	7.48	9.00	8
6"*	11.22	8.46	7.99	0.87	9.49	10.50	8

*Reduced Port



Size	DN	A	F	H	I	K	L	Bolt Holes
4"	3.94	8.66	8.27	7.99	0.71	7.09	13.78	8
6"	5.91	11.22	11.81	8.72	0.87	9.45	18.90	8

** Full Port





Lock-Out / Tag-Out



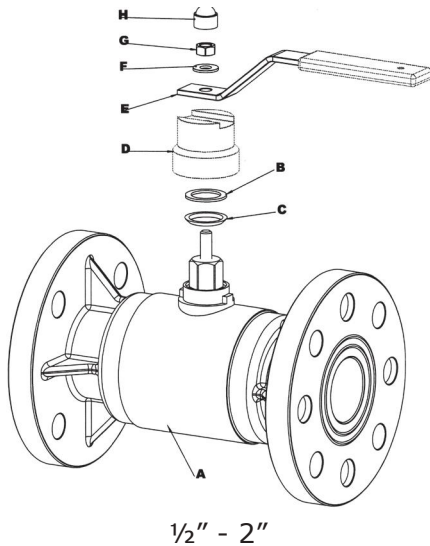
Optional Lockout / Tagout for
1/2" to 2" Valves



Standard Lockout / Tagout for
2 1/2" to 6" Valves

Parts Listing

- A. Body
- B. Flat Stem Seat
- C. Conical Stem Seat
- D. Drive Socket
- E. Handle
- F. Washer
- G. Nut
- H. Cap



- 1. Body
- 2. Drive Socket
- 3. Plate
- 4. Handle
- 5. Trigger
- 6. Spring
- 7. Screw & Bolts
- 8. Cap

